

SHIELDECO TRIMLESS BEZEL

These Trimless bezel accessories conceal the ShieldECO downlight. This creates a clean, seamless finish. Designed to be plastered into the ceiling during the early stages of a build, allowing the ShieldECO to be effortlessly fitted later.



Round and square options available



- Constructed from steel

CODE	DESCRIPTION	FINISH	DIMENSIONS	CUT OUT	MIN VOID
75917	Trimless bezel round	Matt white	H: 40mm Dia: 135mm	Dia: 85mm	150mm
78529	Trimless bezel square	Matt white	H: 40mm Dia: 135mm	Sq: 89 x 89mm	150mm

Pobrano z mamadecor.pl TRIMLESS DOWNLIGHT

The Trimless plaster-in downlight conceals the downlight for a clean, seamless finish. Designed to be plastered into the ceiling during the early stages of a build, allowing for the GU10 or our Pacto LED module (see page 29) to be fitted later. Square and round versions are available.

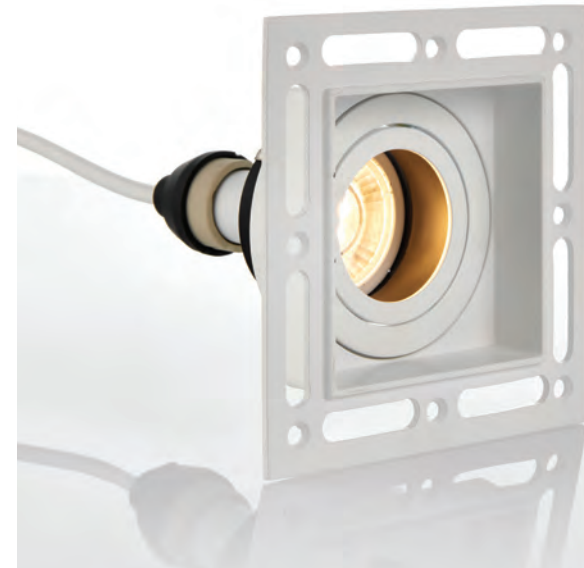


NEW
PRODUCT

20°
TILT

LED
COMPATIBLE

FAST
FIX



Round and square options available



- Constructed from die cast aluminium alloy
- Angle of tilt: 20°

CODE	DESCRIPTION	FINISH	LAMP	DIMENSIONS	CUT OUT	MIN VOID
78954	Trimless downlight round	Matt white	GU10 (required)	Proj: 55mm Dia: 120mm	Dia: 81mm	130mm
78955	Trimless downlight square	Matt white	GU10 (required)	Proj: 55mm Sq: 122mm	Sq: 85mm	130mm