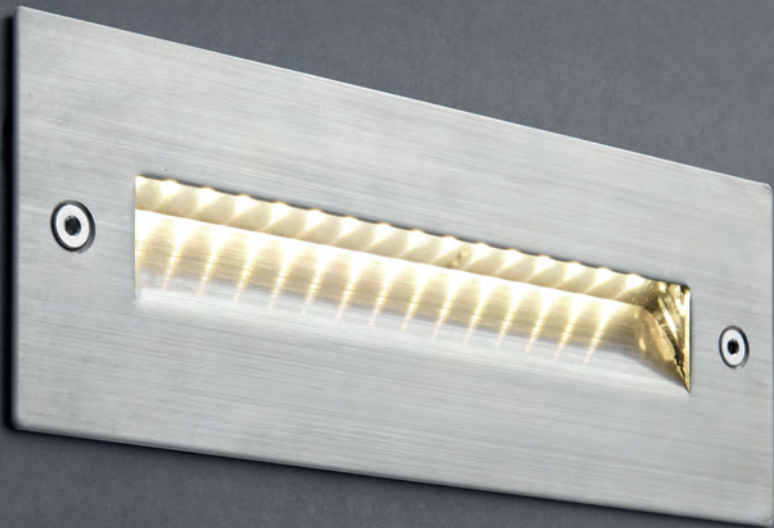


SEINA STAINLESS STEEL

Specially designed LED brick lights. The rear housing is the size of a regular brick, meaning that no special cutting is required. It has a specially designed LED board and has a polycarbonate shade for improved light output. Straightforward installation with angled cable lands and fast fix terminal block. Designed to take armoured cable. Louvered, plain and guide available in three colours, including marine grade brushed stainless steel. RGB colour changing LED option also available.

75527



NEW
PRODUCT

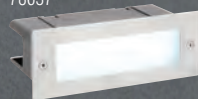
EXACT
BRICK
SIZE

IP44
RATED

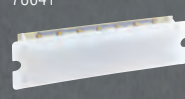


- Constructed from marine grade stainless steel (316) & polycarbonate
- LED module (SMD)
- Min void: 102.5mm
- Cut out: 215 x 65mm
- Warm white module (78641) only compatible with plain fittings

78637



78641



78639



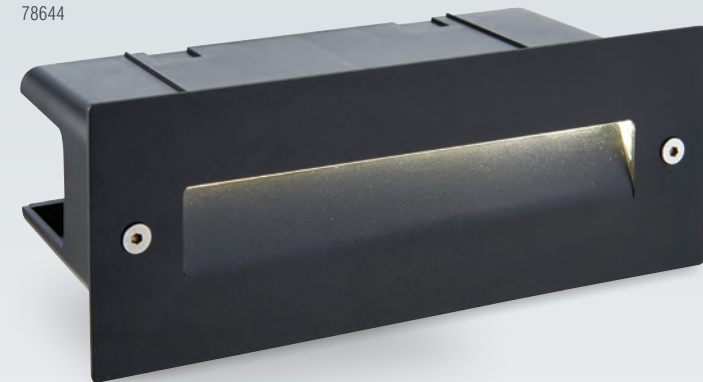
67602



CODE	DESCRIPTION	K	LM	LM/W	DIMENSIONS	
78637	Seina plain IP44 3.5W	A	4000	200	57	Proj: 2mm H: 85mm W: 225mm
67602	Seina RGB IP44 4.2W	A				Proj: 2mm H: 85mm W: 225mm
78639	Seina louver IP44 3.5W	A	4000	50	14	Proj: 8mm H: 85mm W: 225mm
75527	Seina guide IP44 2W	A	4000	100	50	Proj: 2mm H: 85mm W: 225mm
78641	Seina plain warm white module IP44 3.5W	A	3000	200	57	H: 55mm W: 187mm L: 77mm

Specially designed LED brick lights. The rear housing is the size of a regular brick, meaning that no special cutting is required. It has a specially designed LED board and has a polycarbonate shade for improved light output. Straightforward installation with angled cable lands and fast fix terminal block. Designed to take armoured cable. Louvered, plain and guide available in three colours, including marine grade brushed stainless steel. RGB colour changing LED option also available.

78644



NEW
PRODUCT

EXACT
BRICK
SIZE

IP44
RATED



- Constructed from stainless steel (304) & polycarbonate
- Textured black finish
- LED module (SMD)
- Min void: 102.5mm
- Cut out: 215 x 65mm
- Warm white module (78641) only compatible with plain fittings

67603



78641



78640



78638



CODE	DESCRIPTION	K	LM	LM/W	DIMENSIONS	
78638	Seina plain IP44 3.5W	A	4000	200	57	Proj: 2mm H: 85mm W: 225mm
67603	Seina RGB IP44 4.2W	A				Proj: 2mm H: 85mm W: 225mm
78640	Seina louver IP44 3.5W	A	4000	50	14	Proj: 8mm H: 85mm W: 225mm
78644	Seina guide IP44 2W	A	4000	100	50	Proj: 2mm H: 85mm W: 225mm
78641	Seina plain warm white module IP44 3.5W	A	3000	200	57	H: 55mm W: 187mm L: 77mm