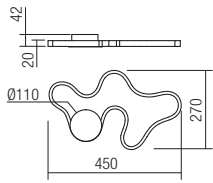


Technical info



art. 01-1786 3000K
art. 01-1871 4000K

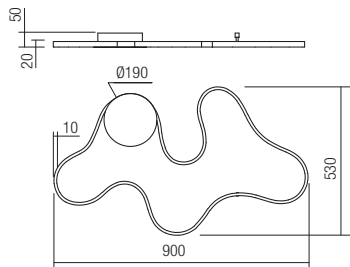


Led type	SMD LED 2835 168 pcs x 0,09W	
Power	16W	
Input	220V-240V, 50/60Hz	
Color temperature	3000K	4000K
Lumen source	1760 lm	1866 lm
Lumen system	850 lm	898 lm
CRI	80	
Not dimmable	☒	

CE IP20



art. 01-1787 3000K
art. 01-1872 4000K

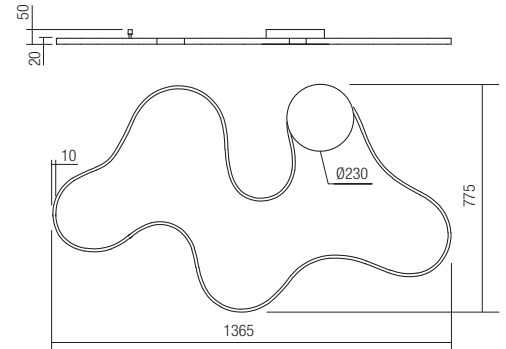


Led type	SMD LED 2835 336 pcs x 0,09W	
Power	28W	
Input	220V-240V, 50/60Hz	
Color temperature	3000K	4000K
Lumen source	2830 lm	2999 lm
Lumen system	1510 lm	1590 lm
CRI	80	
Dimmable (3 step)	☒	

CE IP20



art. 01-1788 3000K
art. 01-1873 4000K



Led type	SMD LED 2835 504 pcs x 0,08W	
Power	42W	
Input	220V-240V, 50/60Hz	
Color temperature	3000K	4000K
Lumen source	4220 lm	4448 lm
Lumen system	2150 lm	2266 lm
CRI	80	
Dimmable (3 step)	☒	

CE IP20

