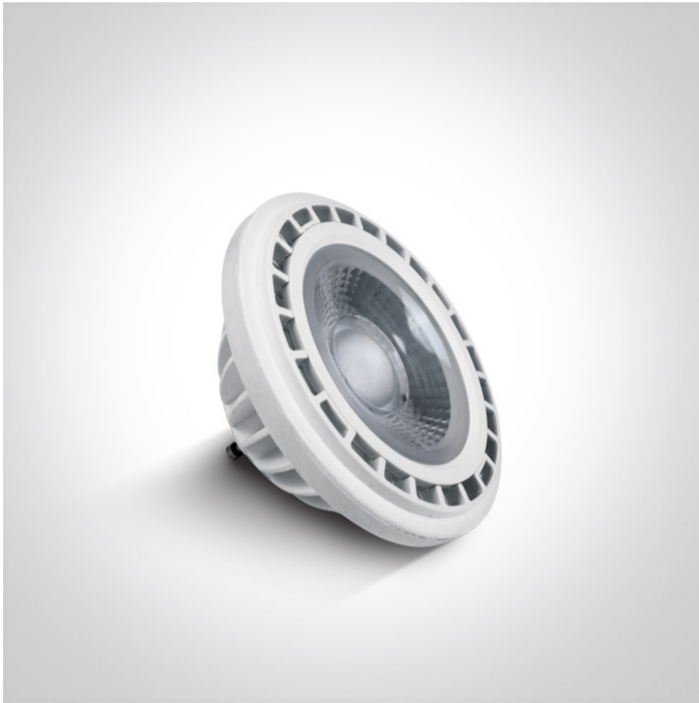


25 Lamps>R111 GU10 LED

7315G/C/45



R111 SMD LED GU10 13W 230V AC lamp, with very low energy consumption, no mercury content and no UV or IR radiation in the light beam. It can be used as an alternative to halogen.

Suitable for residential and commercial applications.

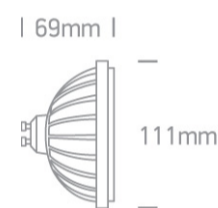
Complies with standard EN62560 and any other specific standards.



Downloads



Dimensions



Physical Specification

Item Group	25 Lamps
Family	R111 GU10 LED
Order Code	7315G/C/45
Shape	Circular
Height	69mm
Diameter	111mm

Electrical Characteristics


Gear	No
------	----

Lamp

Input Type	Mains Voltage
------------	---------------

Input Voltage	220-240V
50 Hz	Yes
60 Hz	Yes
Power(Watts)	13W
Lamp Type	LED
Lamp Holder	GU10
LED Type	SMD 2835
LED Brand	Epistar
Dimmable	No

Illumination Data

Colour Temperature	4000K
Lumen Output	1200lm
Light Efficiency	92,3lm/W
CRI	80
Beam Angle	45°
Illumination Diagram	

Packing Info

Box Length	11,5cm
Box Width	9cm
Box Height	9cm
Box Weight	0.260kg
Pcs/Carton	20
Barcode	5291889032274
HS Code	8539520000

Energy Label



Energy Class

E

Energy Consumption

13kWh/1000h

Certification & Warranty

Warranty

2 years

Switching Cycles

50000

Weee Directive

Yes

switch to
one light!

one
LIGHT

