

19 Wall Recessed & Inground>The Inground Tiltable Range

69074A/W



3x1,5W COB LED inground uplight with a 36° beam which is tiltable +/-20°. IP67, stainless steel 316L and die cast aluminium body.

Supplied with non-dimmable LED driver and box for concrete installation.

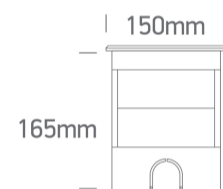
Complies with standard EN60598-1 and any other specific standards.



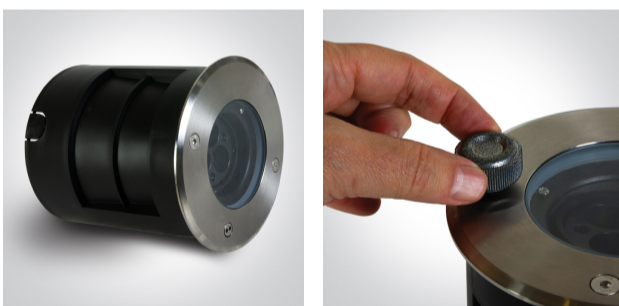
Downloads



Dimensions



Gallery





Physical Specification

Item Group	19 Wall Recessed & Inground
Family	The Inground Tiltable Range
Order Code	69074A/W
Colour	Stainless Steel
Material	Die Cast
Shape	Circular
Height	165mm

Diameter	150mm
Cutout Hole Diameter	140mm
Inground	Yes
Depth Required	185mm+300mm drainage
Indoor	Yes
Outdoor	Yes
Adjustable	1 Direction
IK Rating	10

Electrical Characteristics

Gear	Built In
Fitting + Driver	
Input Voltage	220-240V
50 Hz	Yes
60 Hz	Yes
Safety Class	
Power(Watts)	3x1,5W
IP Rating	IP67
Light Source	LED built in
Dimmable	No
Cable Length	200cm
F Mark	

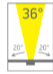
Fitting

Input Type	Constant Current
Light Source	LED built in
LED Type	COB
LED Brand	Cree

Gear

Gear Type	Led Driver
Input Voltage	220-240V
50 Hz	Yes
60 Hz	Yes
Power Factor	0,4
Constant Current	Yes
Dimmable	No
Housing Material	Plastic
Output Terminal	Connector

Illumination Data

Colour Temperature	3000K
Lumen Output	320lm
Light Efficiency	71lm/W
CRI	80
Beam Angle	36°
Illumination Diagram	
Dark Light	Yes

Packing Info

Pcs/Carton	12
Barcode	5291889079637
HS Code	9405413990

Certification & Warranty

Warranty

2 years

Pobrano z mamadecor.pl

Weee Directive

Yes

switch to
one light!

one
LIGHT

