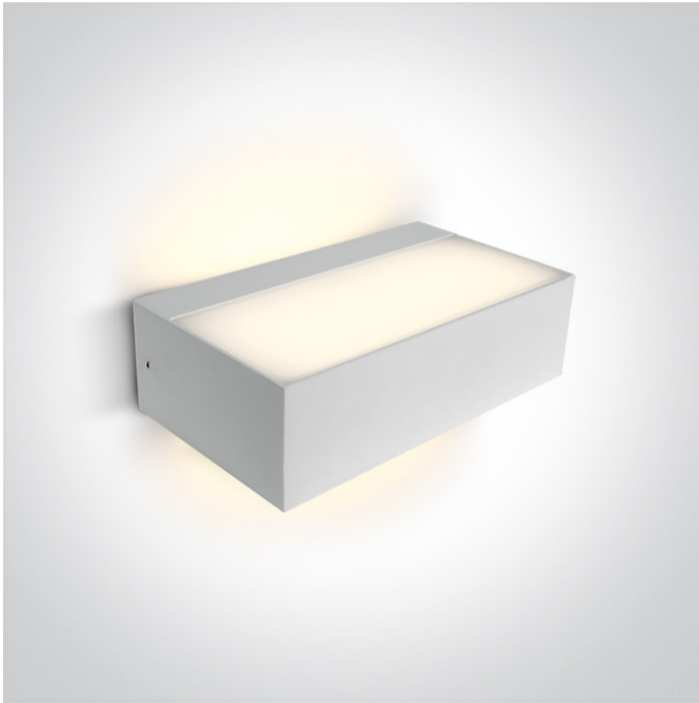


13 Wall & Ceiling LED > Outdoor Wall Up & Down Lights

67362C/W/W



9W LED wall light, IP54, ideal for both indoor and outdoor installation.

Supplied with non-dimmable LED driver.

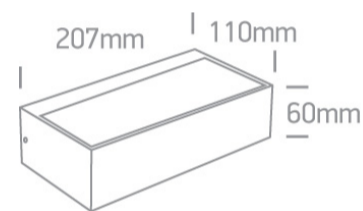
Complies with standard EN60598-1 and any other specific standards.



Downloads



Dimensions



Physical Specification

Item Group	13 Wall & Ceiling LED
Family	Outdoor Wall Up & Down Lights
Order Code	67362C/W/W
Colour	White
Material	Die Cast
Shape	Rectangular
Length	207mm
Width	110mm
Height	60mm
Surface Wall	Yes
Indoor	Yes
Outdoor	Yes

Electrical Characteristics

Gear

Built In

Fitting + Driver

Input Voltage

220-240V

50 Hz

Yes

60 Hz

Yes

Safety Class



Power(Watts)

2x4,5W

IP Rating

IP54

Light Source

LED built in

Dimmable

No

F Mark



Fitting

Input Type

Constant Current

Input Current

350mA

Voltage

25V

Power(Watts)

8,5W

IP Rating

IP54

Light Source

LED built in

LED Type

SMD 3014

LED Brand

Edison

F Mark



Gear

Gear Type


Led Driver

Input Voltage


220-240V

50 Hz

Yes

60 Hz	Yes
Power(Watts)	6-9,1W
Power Factor	0,9
Constant Current	Yes
350mA	17-26V
IP Rating	IP20
Safety Class	
Dimmable	No
Housing Material	Plastic
Output Terminal	Cable
Brand	Eaglerise

Illumination Data

Colour Temperature	3000K
Lumen Output	2x315lm
Light Efficiency	70lm/W
CRI	80
Illumination Diagram	

Packing Info

Box Length	14cm
Box Width	7cm
Box Height	22,5cm
Box Weight	1.000kg
Pcs/Carton	12
Barcode	5291889043775
HS Code	9405409900

Certification & Warranty

Warranty

2 Years

Weee Directive

Yes

switch to
one light!

one
LIGHT

