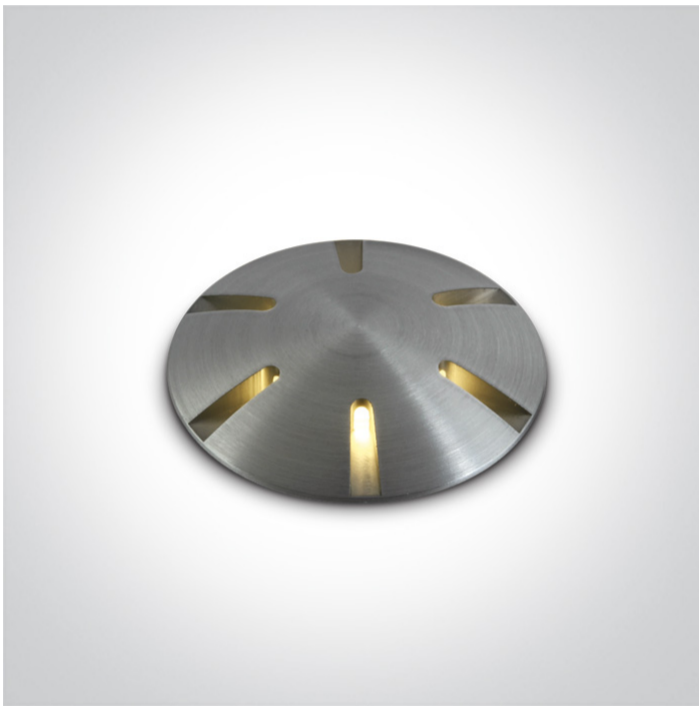


19 Wall Recessed &amp; Inground&gt;The Inground Mini Series Natural Aluminium

**69044/AL/W**

1W COB LED inground, IP67, aluminium, for path illumination.

Requires 350mA driver.

Complies with standard EN60598-1 and any other specific standards.



## Downloads



## Dimensions



## Gallery



## Physical Specification

Item Group

19 Wall Recessed &amp; Inground

Family

The Inground Mini Series Natural Aluminium

Order Code

69044/AL/W

Colour

Aluminium

Material

Natural Aluminium

Shape

Circular



Height

53mm


Diameter	37mm
Cutout Hole Diameter	30mm decking 35mm concrete
Inground	Yes
Depth Required	80mm deck 95mm+300mm drainage Concrete
Indoor	Yes
Outdoor	Yes

## Electrical Characteristics

## Fitting

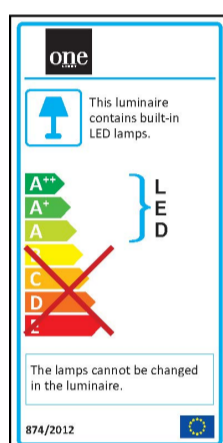
Input Type	Constant Current
Input Current	350mA
Voltage	3,1V
Safety Class	
Power(Watts)	1W
IP Rating	IP67
Light Source	LED built in
LED Type	SMD
LED Brand	Cree
LED Number	1
Cable Length	200cm
F Mark	

## Illumination Data

Colour Temperature	3000K
Lumen Output	80lm
Light Efficiency	80lm/W
CRI	85
Illumination Diagram	

Box Length	6,5cm
Box Width	5cm
Box Height	10,5cm
Box Weight	0,188Kg
Pcs/Carton	50
Barcode	5291889050285
HS Code	9405409900

## Energy Label



## Certification &amp; Warranty

Warranty	2 Years
Average Lifetime	50000Hours
Weee Directive	Yes

switch to  
**one light!**

one  
LIGHT

