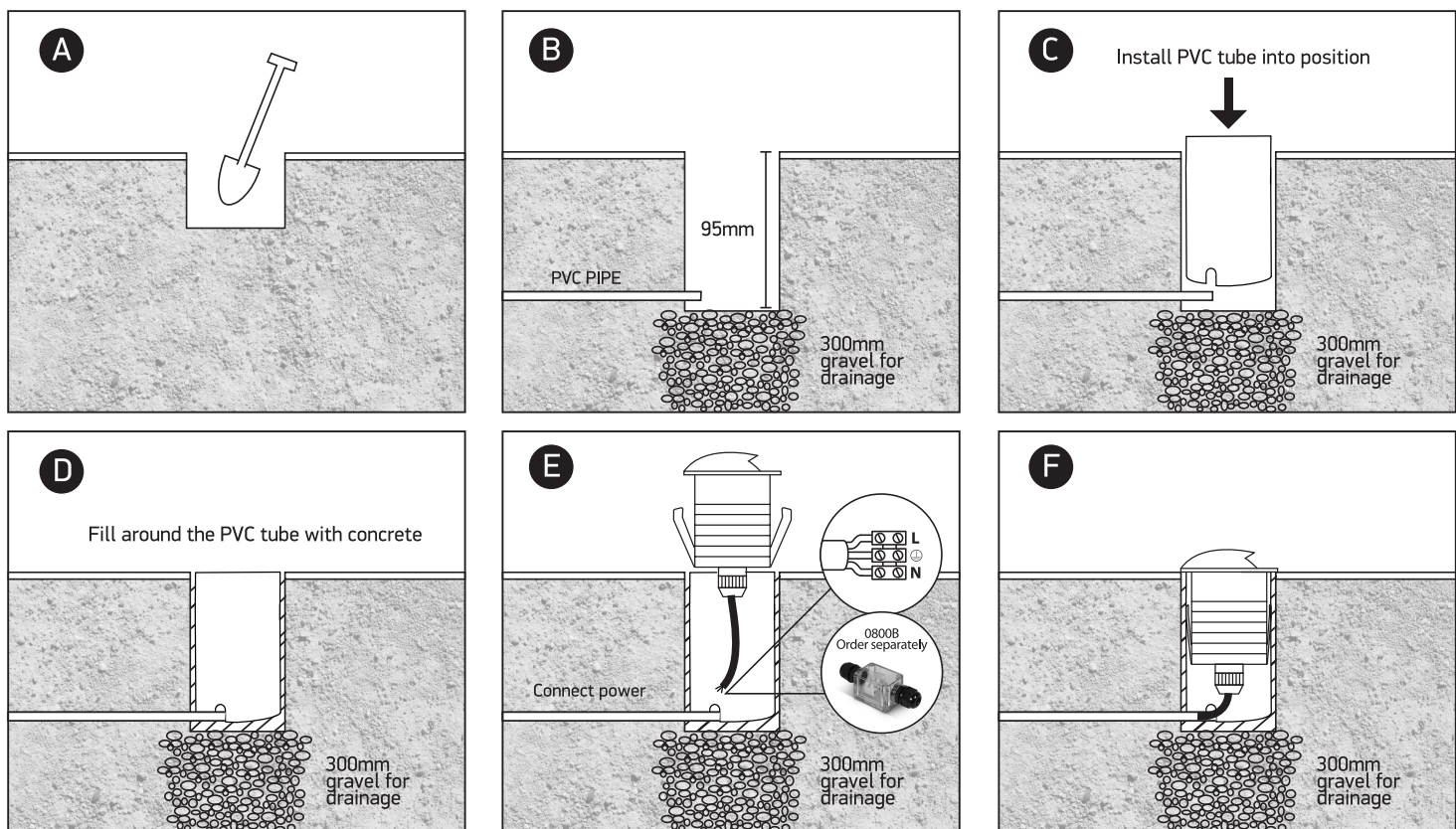


INSTALLATION MANUAL

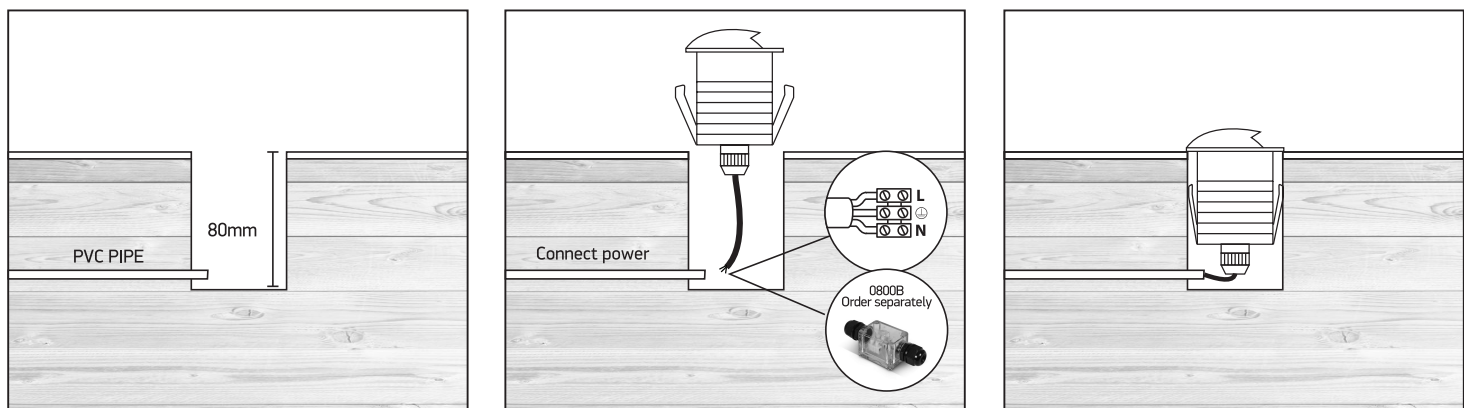
69042A, 69042B

ecoinground III CE RoHS 85 CRI	1W 350mA IP67 Natural aluminium Requires 350mA driver.	Decking Installation 	Concrete Installation 	200cm 	37mm 	37mm 	
		30mm 	35mm 	95mm+300mm drainage 	60mm 	60mm 	

CONCRETE INSTALLATION



DECKING INSTALLATION



Warnings:

1. Make sure that the product is installed properly before connecting to electricity.
2. Do not cover the fitting.
3. Maintenance and installation should only be carried out by a professional electrician.