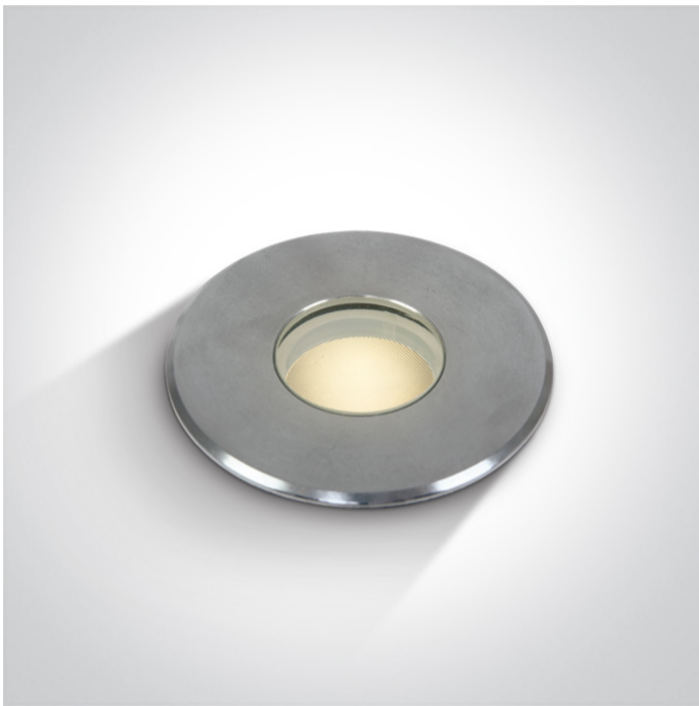


19 Wall Recessed &amp; Inground&gt;The COB Inground Range 2-6W

**69028/W**

2W COB LED inground, IP67, stainless steel 316, for path illumination.

Supplied with non-dimmable LED driver.

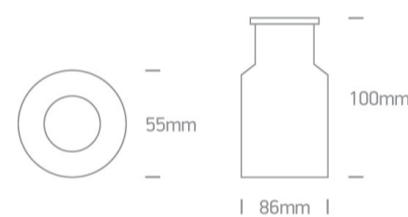
Complies with standard EN60598-1 and any other specific standards.



## Downloads



## Dimensions



## Gallery



## Physical Specification

Item Group

19 Wall Recessed &amp; Inground

Family

The COB Inground Range 2-6W

Order Code

69028/W

Colour

Stainless Steel

Material

Stainless Steel 316

Diffuser Material



Glass


Shape


Circular

Height	100mm
Diameter	55mm
Cutout Hole Diameter	86mm
Inground	Yes
Depth Required	100mm+300mm drainage
Indoor	Yes
Outdoor	Yes
Adjustable	No


## Electrical Characteristics

Gear	Built In
Fitting + Driver	
Input Voltage	100-240V
50 Hz	Yes
60 Hz	Yes
Safety Class	
Power(Watts)	2W
IP Rating	IP67
Light Source	LED built in
Dimmable	No
Cable Length	50cm
F Mark	

Fitting	
Input Type	Constant Current
Input Current	600mA
Voltage	3V
Safety Class	
Power(Watts)	1,8W
IP Rating	IP67

Light Source	LED built in
LED Type	COB
LED Brand	Osram
<b>Gear</b>	
Gear Type	Led Driver
Input Voltage	100-240V
50 Hz	Yes
60 Hz	Yes
Power(Watts)	2W
Power Factor	0,9
Constant Current	Yes
600mA	3V
IP Rating	IP20
Safety Class	
Dimmable	No
Ambient Temp	-20~+55°C
Operating Temp	80°C
Housing Material	Plastic
Output Terminal	Connector
Brand	BTEC
Protection	Short Circuit

**Illumination Data**

Colour Temperature	3000K
Lumen Output	65lm
Light Efficiency	32,5lm/W
CRI	80
Beam Angle	30°
Illumination Diagram	

Box Weight	0,5Kg
Barcode	5291889038702
HS Code	9405409900

## Certification &amp; Warranty

Warranty	2 Years
Average Lifetime	50000Hours
Weee Directive	Yes

switch to  
**one light!**

one  
LIGHT

