

# INSTALLATION MANUAL

67282ANE

**ecolight**



80  
CRI



295x295mm

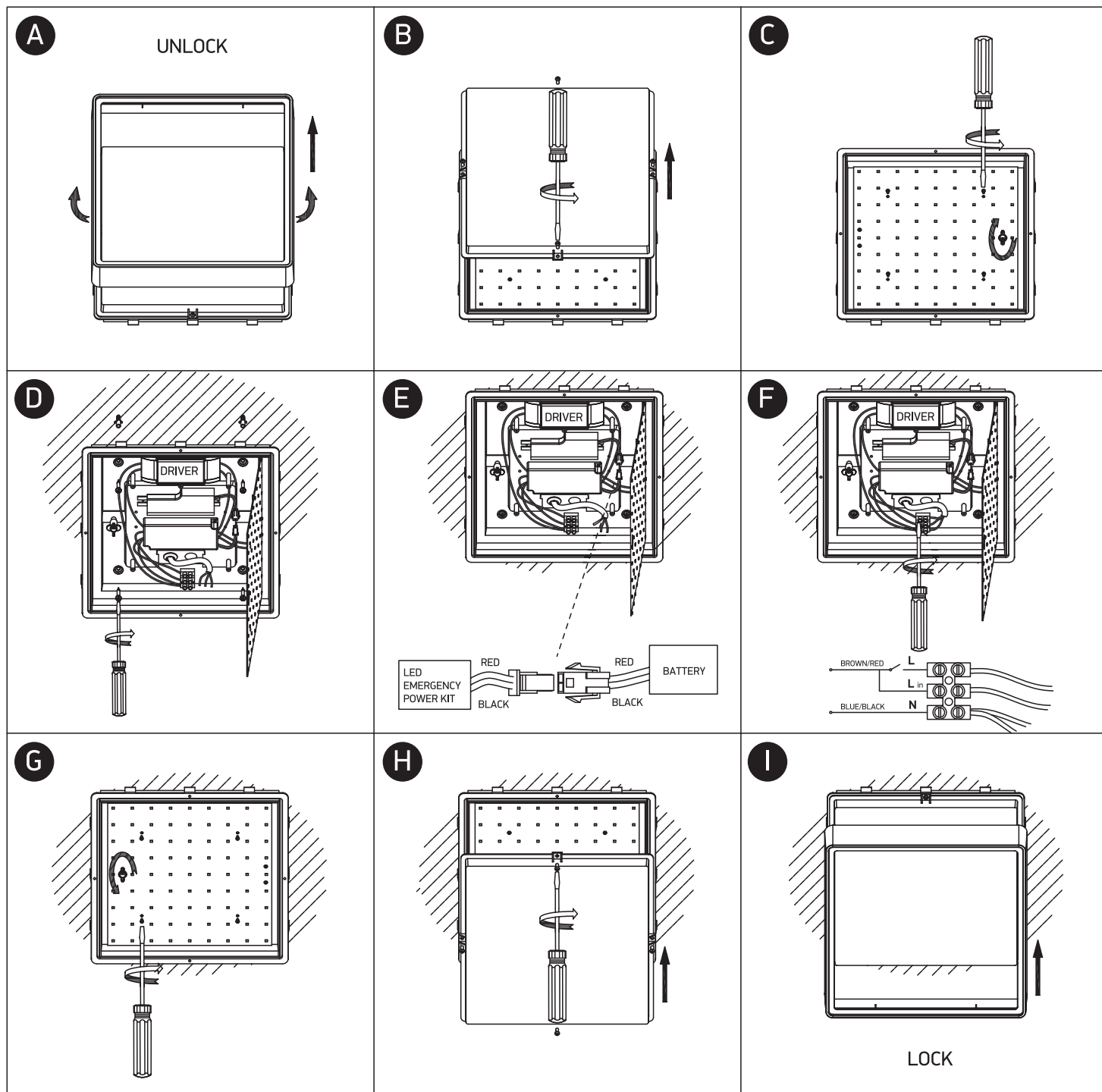


80mm

**one**  
LIGHT

230V | SMD 2835 | 16W | IP65 | Emergency 3Hrs Maintained | Plastic

Complete with driver.



## Warnings:

1. Make sure that the product is installed properly before connecting to electricity.
2. Do not cover the fitting.
3. Maintenance and installation should only be carried out by a professional electrician.