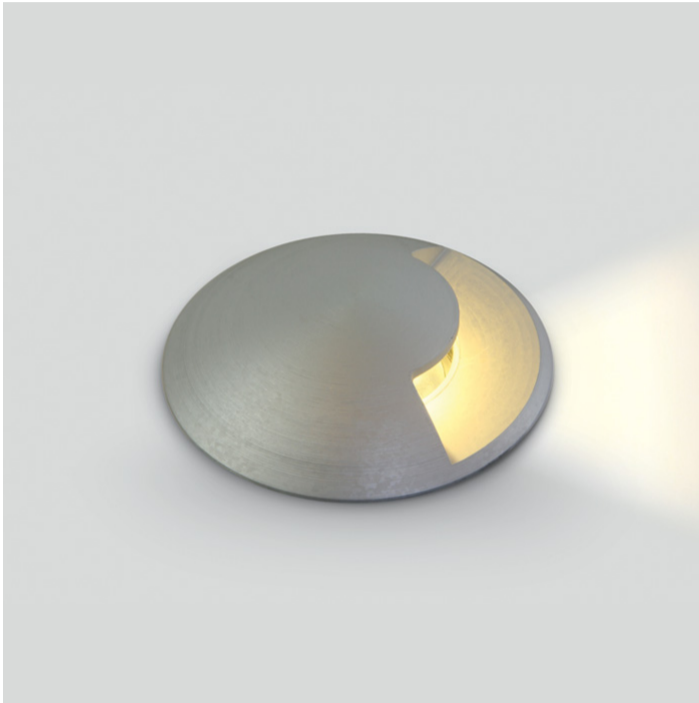


19 Wall Recessed &amp; Inground&gt;The Inground Medium Series GU10

69016BG



Inground MR16 fitting with GU10 lampholder, IK10, IP67.

Complies with standard EN60598-1 and any other specific standards.



## Downloads



## Dimensions



## Gallery



## Physical Specification

Item Group

19 Wall Recessed &amp; Inground

Family

The Inground Medium Series GU10

Order Code

69016BG

Colour

Aluminium

Material

Aluminium

Shape

Circular

Height

125mm

Diameter	88mm
Cutout Hole Diameter	80mm
Inground	Yes
Depth Required	130mm+300mm drainage
Indoor	Yes
Outdoor	Yes
IK Rating	10


## Electrical Characteristics

Gear	No
------	----

## Fitting + Driver

Input Voltage	100-240V
50 Hz	Yes
60 Hz	Yes
Safety Class	
Power(Watts)	10W
IP Rating	IP67
Light Source	Replaceable lamp
Lamp Holder	GU10
Number of Lamps	1
Dimmable	N/A
Cable Length	200cm
F Mark	

## Illumination Data

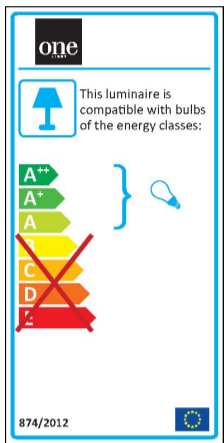
Illumination Diagram	
----------------------	---

## Packing Info

Box Length	18,5cm
------------	--------

Box Width	12,5cm
Box Height	12,5cm
Pcs/Carton	18
Barcode	5291889058090
HS Code	9405409900

## Energy Label



## Certification &amp; Warranty

Warranty

2 Years

Weee Directive

Yes

switch to  
**one light!**

one  
LIGHT

