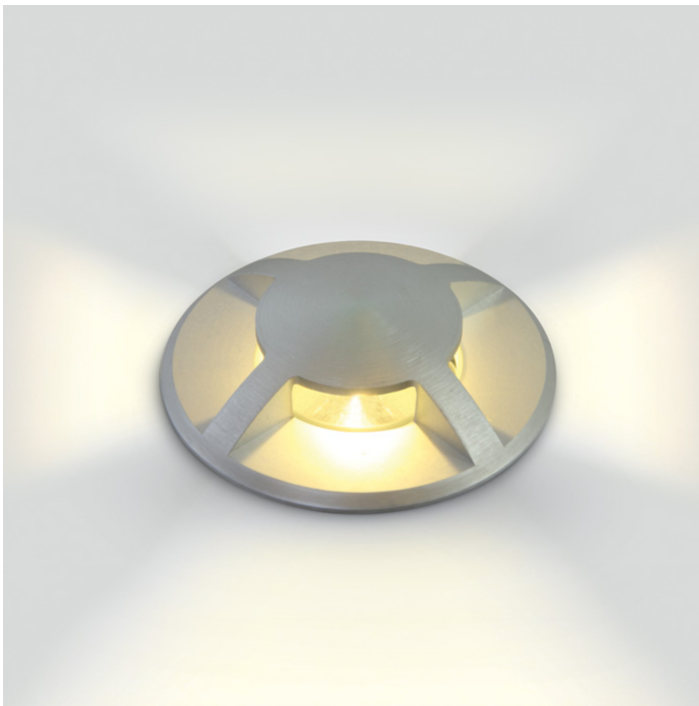


19 Wall Recessed &amp; Inground&gt;The Inground Medium Series LED Aluminium

**69016A/W**

3W COB LED inground, aluminium, for path illumination., IK08, IP67.

Supplied with non-dimmable LED driver.

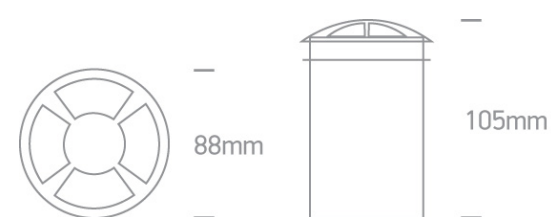
Complies with standard EN60598-1 and any other specific standards.



## Downloads



## Dimensions



## Gallery



## Physical Specification

Item Group

19 Wall Recessed &amp; Inground

Family

The Inground Medium Series LED Aluminium

Order Code

69016A/W

Colour

Aluminium

Material

Aluminium

Shape



Circular

Height

105mm

Diameter	88mm
Cutout Hole Diameter	77mm
Inground	Yes
Depth Required	105mm+300mm drainage
Indoor	Yes
Outdoor	Yes
IK Rating	8

## Electrical Characteristics

Gear	Built In
Fitting + Driver	
Input Voltage	100-240V
50 Hz	Yes
60 Hz	Yes
Safety Class	
Power(Watts)	3W
IP Rating	IP67
Light Source	LED built in
Dimmable	No
Cable Length	200cm
F Mark	

Fitting	
Input Type	Constant Current
Input Current	350mA
Voltage	8V
Power(Watts)	2,8W
IP Rating	IP67
Light Source	LED built in
LED Type	SMD 1208

## Gear

Gear Type

Led Driver

Input Voltage

100-240V

50 Hz

Yes

60 Hz

Yes

Power(Watts)

1-4W

Power Factor

0,5

Constant Current

Yes

350mA

3-11V

IP Rating

IP20

Safety Class



Dimmable

No

Housing Material

Plastic

Brand

Gallop

## Illumination Data

Colour Temperature

3000K

Lumen Output

150lm

Light Efficiency

50lm/W

CRI

80

Illumination Diagram



## Packing Info

Box Length

18,5cm

Box Width

12,5cm

Box Height

12,5cm

Box Weight

0,770Kg

Pcs/Carton

18

Barcode

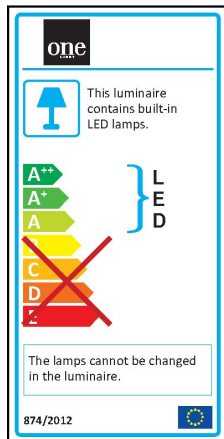
5291889030188

Pobrano z mamadecor.pl

HS Code

9405409900

## Energy Label



## Certification & Warranty

Warranty

2 Years

Weee Directive

Yes

switch to  
**one light!**

one  
LIGHT

