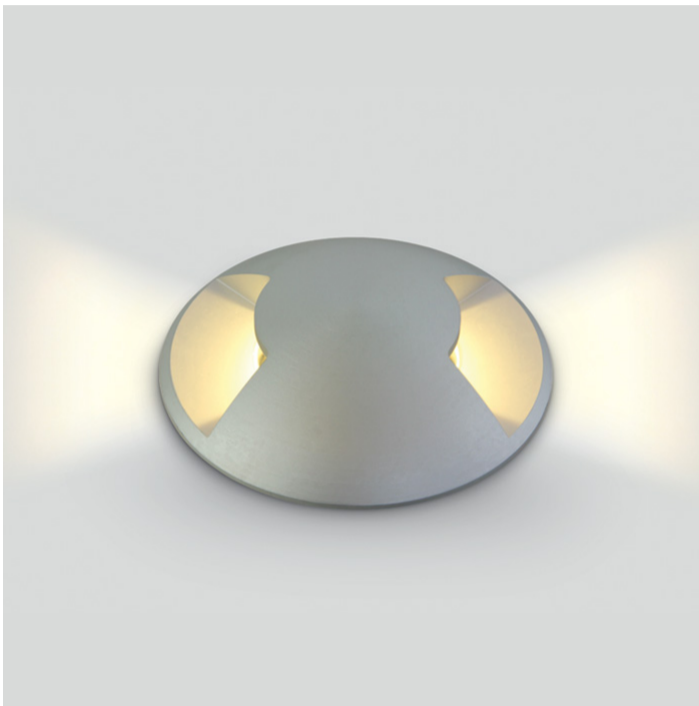


19 Wall Recessed & Inground>The Inground Medium Series LED Aluminium

69016/W

3W COB LED inground, aluminium, for path illumination., IK08, IP67.

Supplied with non-dimmable LED driver.

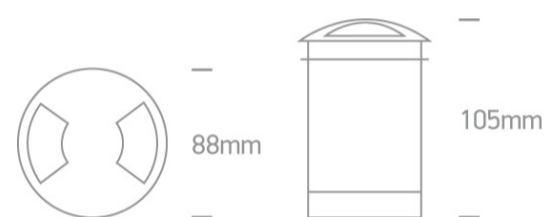
Complies with standard EN60598-1 and any other specific standards.



Downloads



Dimensions



Gallery



Physical Specification

Item Group

19 Wall Recessed & Inground

Family

The Inground Medium Series LED Aluminium

Order Code

69016/W

Colour

Aluminium

Material

Aluminium

Shape



Circular

Height

105mm

| | |
|----------------------|----------------------|
| Diameter | 88mm |
| Cutout Hole Diameter | 77mm |
| Inground | Yes |
| Depth Required | 105mm+300mm drainage |
| Indoor | Yes |
| Outdoor | Yes |
| IK Rating | 8 |

Electrical Characteristics

| | |
|------------------|---|
| Gear | Built In |
| Fitting + Driver | |
| Input Voltage | 100-240V |
| 50 Hz | Yes |
| 60 Hz | Yes |
| Safety Class |  |
| Power(Watts) | 3W |
| IP Rating | IP67 |
| Light Source | LED built in |
| Dimmable | No |
| Cable Length | 200cm |
| F Mark |  |

| | |
|---------------|------------------|
| Fitting | |
| Input Type | Constant Current |
| Input Current | 350mA |
| Voltage | 6V |
| Power(Watts) | 2,8W |
| IP Rating | IP67 |
| Light Source | LED built in |
| LED Type | SMD 1208 |

Gear

Gear Type

Led Driver

Input Voltage

100-240V

50 Hz

Yes

60 Hz

Yes

Power(Watts)

1-4W

Power Factor

0,5

Constant Current

Yes

350mA

3-11V

IP Rating

IP20

Safety Class



Dimmable

No

Ambient Temp

55°C

Housing Material

Plastic

Brand

Gallop

Illumination Data

Colour Temperature

3000K

Lumen Output

120lm

Light Efficiency

40lm/W

CRI

80

Illumination Diagram



Packing Info

Box Length

18,5cm

Box Width

12,5cm

Box Height

12,5cm

Box Weight

0,790Kg

Pcs/Carton

18

Pobrano z mamadecor.pl

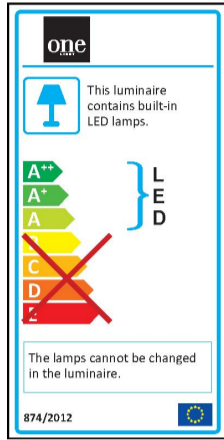
Barcode

5291889030171

HS Code

9405409900

Energy Label



Certification & Warranty

Warranty

2 Years

Average Lifetime

50000hours

Weee Directive

Yes

switch to
one light!

one
LIGHT

