

19 Wall Recessed & Inground > Wall Recessed Pro Range

68072B/W



7W LED wall recessed light, IP65, ideal for both indoor and outdoor installation.

Complete 350mA driver.

Supplied with box for concrete installation

Complies with standard EN60598-1 and any other specific standards.



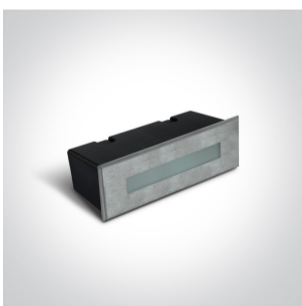
Downloads



Dimensions



Gallery






Physical Specification


Item Group	19 Wall Recessed & Inground
Family	Wall Recessed Pro Range
Order Code	68072B/W
Colour	Stainless Steel
Material	Stainless Steel 316
Diffuser Material	Glass
Shape	Rectangular

Length	195mm
Width	63mm
Height	67mm
Cutout Hole Width	182mm
Cutout Hole Length	55mm
Recessed wall	Yes
Depth Required	75mm
Indoor	Yes
Outdoor	Yes
IK Rating	8


Electrical Characteristics

Gear	Built In
Fitting + Driver	
Input Voltage	220-240V
50 Hz	Yes
60 Hz	Yes
Safety Class	
Power(Watts)	7W
IP Rating	IP65
Light Source	LED built in
Dimmable	No
F Mark	


Fitting	
Input Type	Constant Current
Input Current	350mA
Voltage	17V
Safety Class	
Power(Watts)	6,12W

IP Rating	IP65
Light Source	LED built in
LED Type	SMD 2835
LED Brand	Edison
F Mark	

Gear

Gear Type	Led Driver
Input Voltage	220-240V
50 Hz	Yes
60 Hz	Yes
Power(Watts)	3-6,12W
Power Factor	0,5
Constant Current	Yes
350mA	8,5-17.5V
IP Rating	IP20
Safety Class	
Housing Material	Plastic
Brand	Eaglerise
Protection	0

Illumination Data

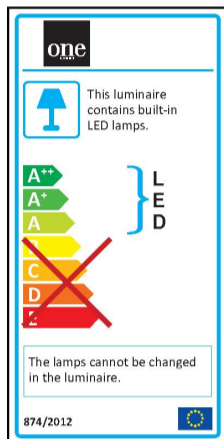
Colour Temperature	3000K
Lumen Output	140lm
Light Efficiency	20lm/W
CRI	80
Illumination Diagram	

Packing Info

Box Length	9cm
------------	-----

Box Width	8cm
Box Height	22,5cm
Pcs/Carton	12
Barcode	5291889057741
HS Code	9405409900

Energy Label



Certification & Warranty

Warranty

2 Years

Weee Directive

Yes

switch to
one light!

one
LIGHT

