

INSTALLATION MANUAL

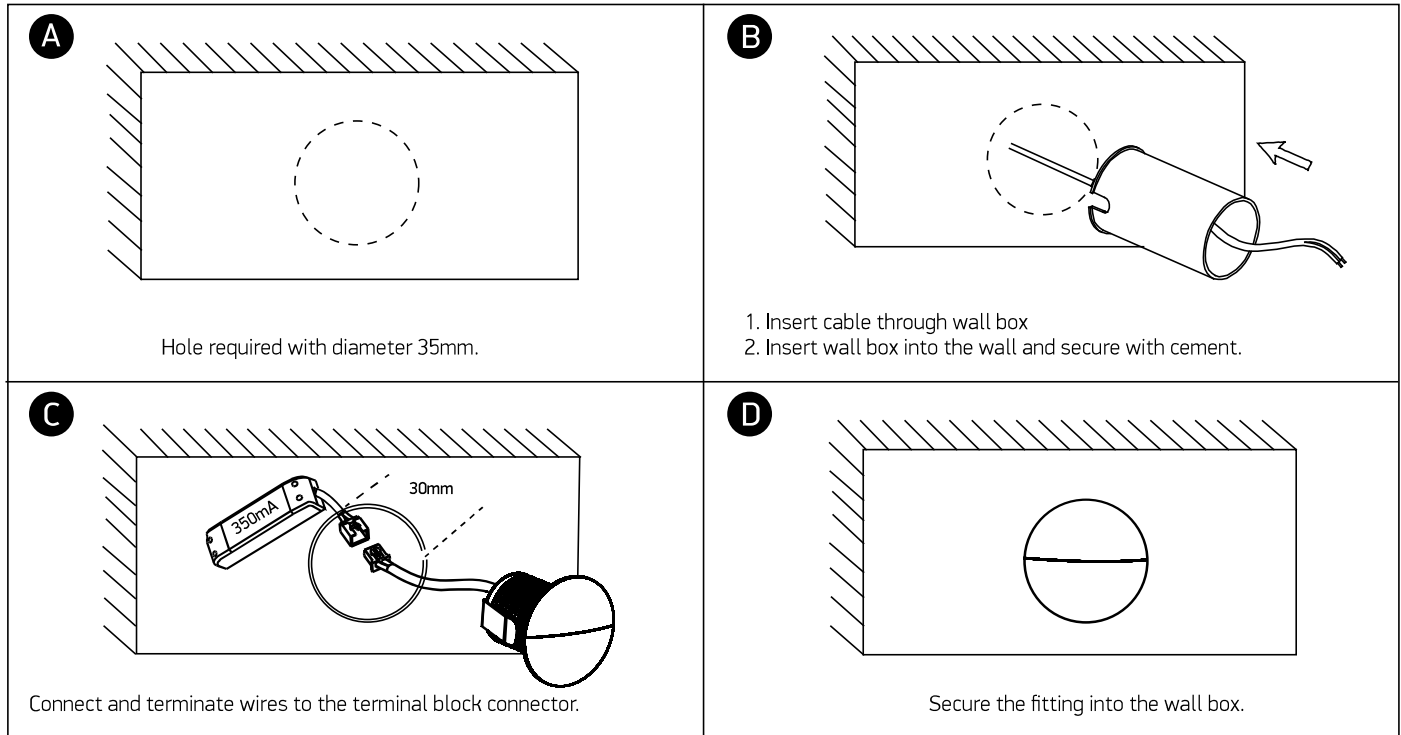
68070

LED
BUILT IN

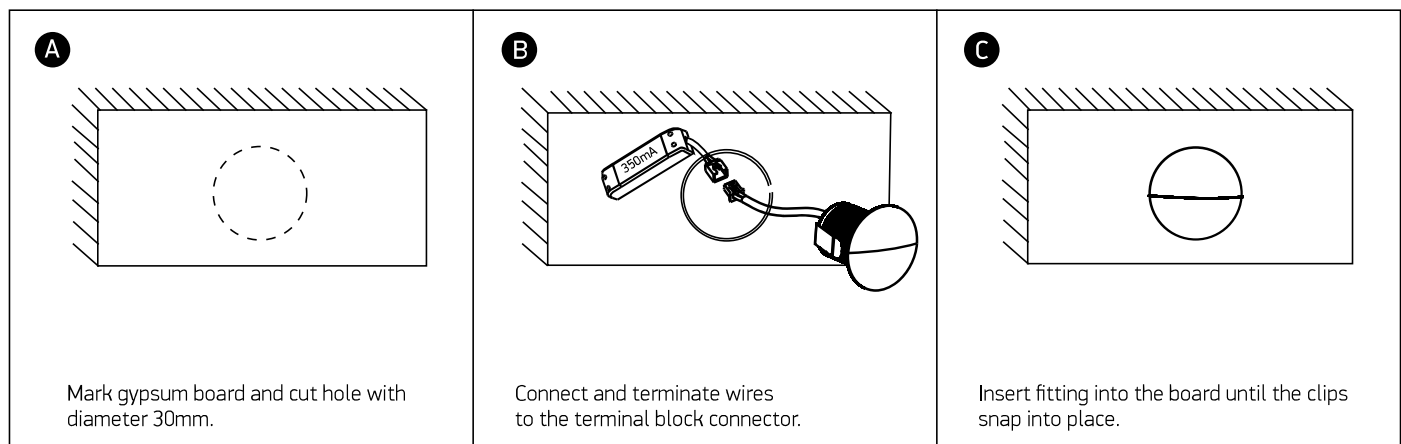
 350mA | 1W | IP65 | Aluminium
 Requires 350mA driver.

one
LIGHT

FOR CONCRETE INSTALLATION



FOR GYPSUM INSTALLATION



Warnings:

1. Make sure that the product is installed properly before connecting to electricity.
2. Do not cover the fitting.
3. Maintenance and installation should only be carried out by a professional electrician.