

INSTALLATION MANUAL

68068A

ecolight

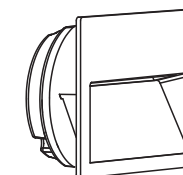


DARK
LIGHT

80
CRI



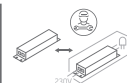
135mm



115x
115mm

100-240V | SMD 2835 | 4W | IP65 | Die cast

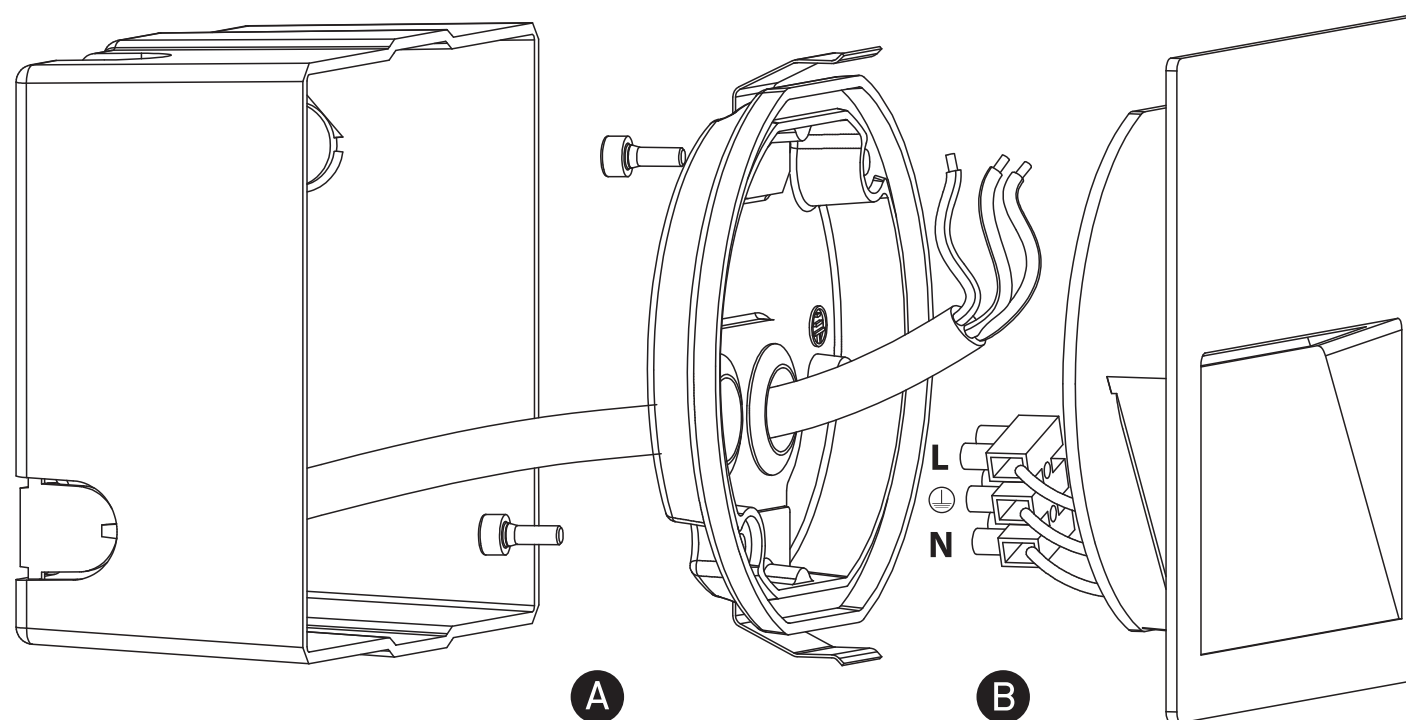
Complete with 350mA driver.
Supplied with box for concrete installation.



110x
110mm
Concrete
installation

100x
100mm
Gypsum
installation

60mm



Warnings:

1. Make sure that the product is installed properly before connecting to electricity.
2. Do not cover the fitting.
3. Maintenance and installation should only be carried out by a professional electrician.