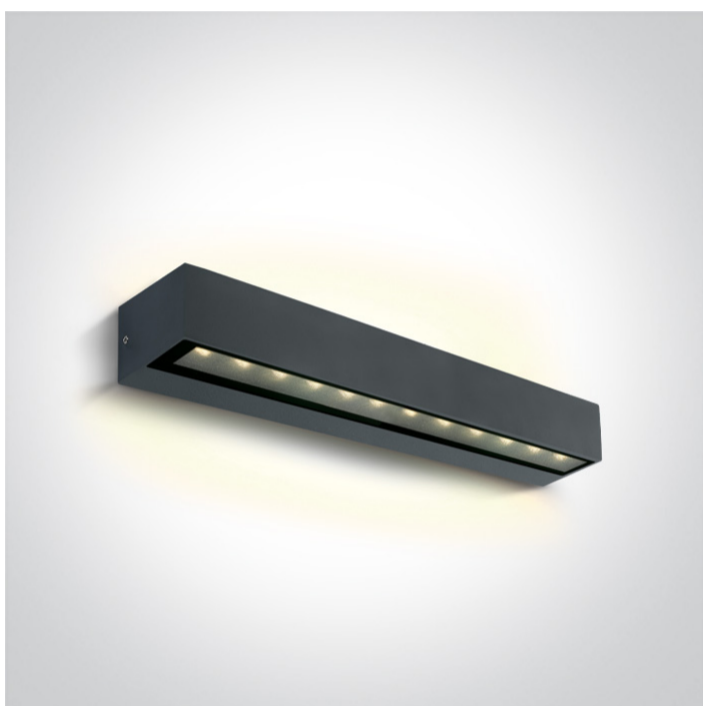


New 2023 Edition 2>Wall & Ceiling LED

67526B2/AN/W



2x10W Wall light, IP65.

Complete with 500mA driver.

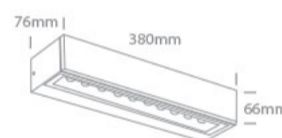
Complies with standard EN60598-1 and any other specific standards.



Downloads



Dimensions



Physical Specification

Item Group	New 2023 Edition 2
Family	Wall & Ceiling LED
Order Code	67526B2/AN/W
Colour	Anthracite
Material	Die Cast
Shape	Rectangular
Length	380mm
Width	76mm
Height	66mm
Surface Wall	Yes
Indoor	Yes
Outdoor	Yes

Adjustable

No

Pobrano z mamadecor.pl

IK Rating

7

Electrical Characteristics

Gear

Built In

Fitting + Driver

Input Voltage

220-240V

50 Hz

Yes

60 Hz

Yes

Safety Class



Power(Watts)

2x10W

IP Rating

IP65

Light Source

LED built in

Dimmable

No

F Mark



Fitting

Input Type

Constant Current

Input Current

500mA

Voltage

34,8V

Power(Watts)

17,4W

IP Rating

IP65

Light Source

LED built in

LED Type

SMD 3030

LED Brand

Osram

Gear

Gear Type


Led Driver

Input Voltage


220-240V

50 Hz

Yes

60 Hz	Yes
Power(Watts)	14-21W
Power Factor	0,9
Constant Current	Yes
500mA	28-42V
IP Rating	IP20
Safety Class	
Dimmable	No
Housing Material	Plastic
Brand	Eaglerise
Protection	0

Illumination Data

Colour Temperature	3000K
Lumen Output	1200lm
Light Efficiency	120lm/W
CRI	80
Illumination Diagram	

Packing Info

Pcs/Carton	6
Barcode	5291889075790
HS Code	9405413990

Certification & Warranty

switch to
one light!

one
LIGHT

