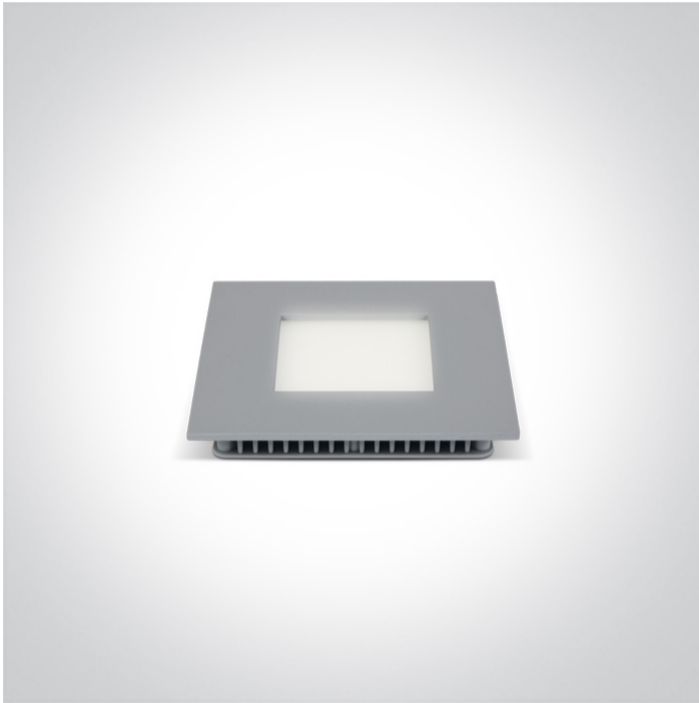


06 Downlights Fixed LED>The 8-16W Square Recessed Panels Die cast

50108F/G/D

8W slim downlight LED, IP40, ideal for commercial applications such as offices, galleries and showrooms.

Supplied with 500mA non-dimmable LED driver.

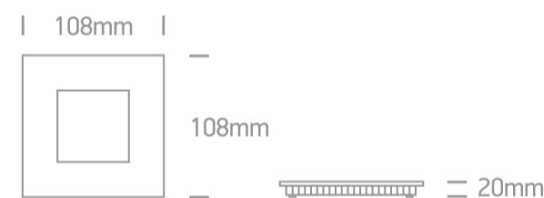
Complies with standard EN60598-1 and any other specific standards.



Downloads



Dimensions



Gallery



Physical Specification

Item Group

06 Downlights Fixed LED

Family

The 8-16W Square Recessed Panels Die cast

Order Code

50108F/G/D

Colour

Grey

Material

Die Cast

Diffuser Material



Acrylic


Shape

Rectangular

Length	108mm
Width	108mm
Height	20mm
Cutout Hole Width	96mm
Cutout Hole Length	96mm
Recessed Ceiling	Yes
Depth Required	40mm
Indoor	Yes
Adjustable	No


Electrical Characteristics

Gear	External-Included
Fitting + Driver	
Input Voltage	100-240V
50 Hz	Yes
60 Hz	Yes
Safety Class	
Power(Watts)	8W
IP Rating	IP40
Light Source	LED built in
Dimmable	No
F Mark	


Fitting	
Input Type	Constant Current
Input Current	500mA
Voltage	14V
Safety Class	
Power(Watts)	7W
IP Rating	IP40

Light Source	LED built in
LED Type	SMD 2016
LED Brand	Epistar
LED Number	52

Gear

Gear Type	Led Driver
Input Voltage	100-240V
50 Hz	Yes
60 Hz	Yes
Power(Watts)	5,5-7W
Power Factor	0,9
Constant Current	Yes
500mA	11-14V
IP Rating	IP20
Safety Class	
Dimmable	No
Ambient Temp	40°C
Operating Temp	85°C
Housing Material	Plastic
Brand	ONE LIGHT Ltd

Illumination Data

Colour Temperature	6000K
Lumen Output	461lm
Light Efficiency	57,62lm/W
CRI	80
Beam Angle	120°
Illumination Diagram	

Packing Info

Box Length	17cm
Box Width	15cm
Box Height	3cm
Box Weight	0,335Kg
Pcs/Carton	40
Barcode	5291889039747
HS Code	9405409900

Certification & Warranty

Warranty	2 Years
Average Lifetime	30000 hours
Weee Directive	Yes

switch to
one light!

one
LIGHT

