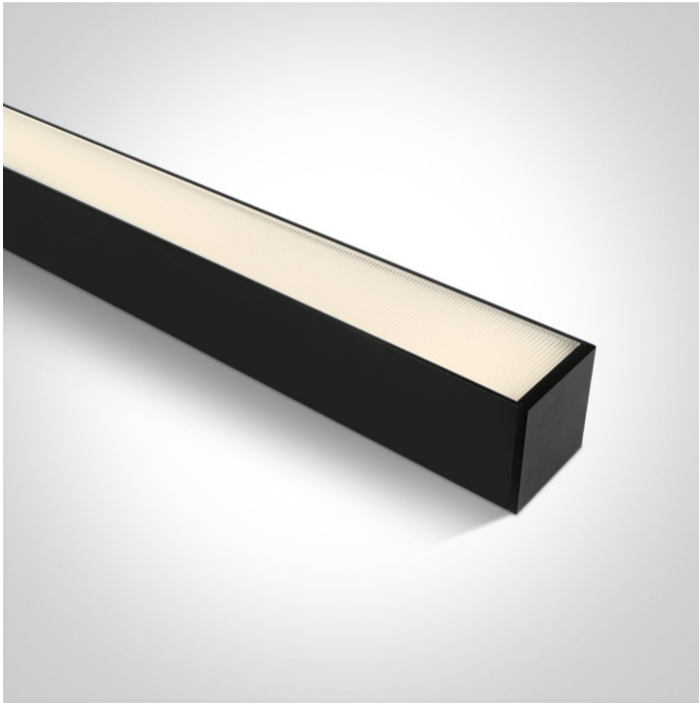


11 Office & Kitchen>LED Linear Profiles Large size

38160A/B/W



40W UGR19 Surface and suspended linear LED with diffuser, ideal for offices. Complete with 1000mA driver , 4pcs fixing clips & 4pcs connectors .

Complies with standard EN60598-1 and any other specific standards.



Downloads



Dimensions



Gallery



Accessories





050170

Physical Specification

Item Group	11 Office & Kitchen
Family	LED Linear Profiles Large size
Order Code	38160A/B/W
Colour	Black
Material	Aluminium
Diffuser Material	PC
Shape	Rectangular
Length	1200mm
Width	75mm
Height	75mm
Surface Ceiling	Yes
Suspended Ceiling	Yes
Indoor	Yes
Adjustable	No


Electrical Characteristics

Gear	Built In
Fitting + Driver	
Input Voltage	220-240V
50 Hz	Yes
60 Hz	Yes
Safety Class	
Power(Watts)	40W
IP Rating	IP20
Light Source	LED built in
Dimmable	No
Cable Length	300cm
F Mark	


Fitting

Input Type	Constant Current
Input Current	1000mA
Voltage	38V
Power(Watts)	38W
IP Rating	IP20
Light Source	LED built in
LED Type	SMD 2835
LED Brand	Epistar

Gear

Gear Type	Led Driver
Input Voltage	220-240V
50 Hz	Yes
60 Hz	Yes
Power(Watts)	30-42W
Power Factor	0,9
Constant Current	Yes
1000mA	30-42V
IP Rating	IP20
Safety Class	
Dimmable	No
Brand	AGT

Illumination Data

Colour Temperature	3000K
Lumen Output	3400lm
Light Efficiency	85lm/W
CRI	90
Illumination Diagram	

Packing Info

Box Weight	3.130kg
Pcs/Carton	12
Barcode	5291889064183
HS Code	9405409900

Certification & Warranty

Warranty	3 Years
Weee Directive	Yes

switch to
one light!

one
LIGHT

