

04 Recessed Spots Adjustable LED>The 1W Mini Square Natural Aluminium

51201AL/D/35



2x1W LED adjustable recessed spot, mini series range, IP20.

Requires 350mA driver.

Complies with standard EN60598-1 and any other specific standards.



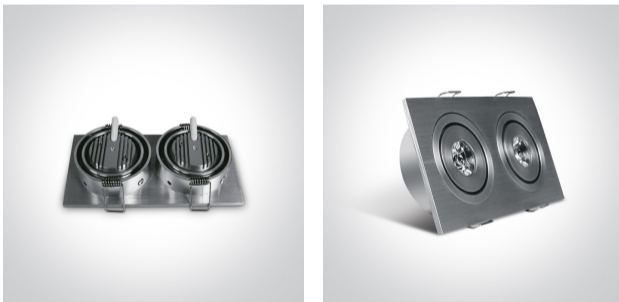
Downloads



Dimensions



Gallery



Must be ordered separately



89004





89004T

Physical Specification


| | |
|--------------------|--------------------------------------|
| Item Group | 04 Recessed Spots Adjustable LED |
| Family | The 1W Mini Square Natural Aluminium |
| Order Code | 51201AL/D/35 |
| Colour | Aluminium |
| Material | Natural Aluminium |
| Diffuser Material | Acrylic |
| Shape | Rectangular |
| Length | 113mm |
| Width | 60mm |
| Height | 30mm |
| Cutout Hole Width | 105mm |
| Cutout Hole Length | 53mm |
| Recessed Ceiling | Yes |
| Depth Required | 40mm |
| Indoor | Yes |
| Adjustable | 2 Directions |

Electrical Characteristics

Fitting

| | |
|---------------|---|
| Input Type | Constant Current |
| Input Current | 350mA |
| Safety Class |  |
| Power(Watts) | 2W |
| IP Rating | IP20 |
| Light Source | LED built in |
| LED Number | 2 |
| Cable Length | 40cm |
| F Mark |  |

Illumination Data

| | |
|----------------------|---|
| Colour Temperature | 6000K |
| Lumen Output | 2x60lm |
| Light Efficiency | 60lm/W |
| Beam Angle | 35° |
| Illumination Diagram |  |

Packing Info

| | |
|------------|---------------|
| Pcs/Carton | 50 |
| Barcode | 5291889015901 |
| HS Code | 9405409900 |

Certification & Warranty

| | |
|----------------|---------|
| Warranty | 2 Years |
| Weee Directive | Yes |

switch to
one light!

one
LIGHT

