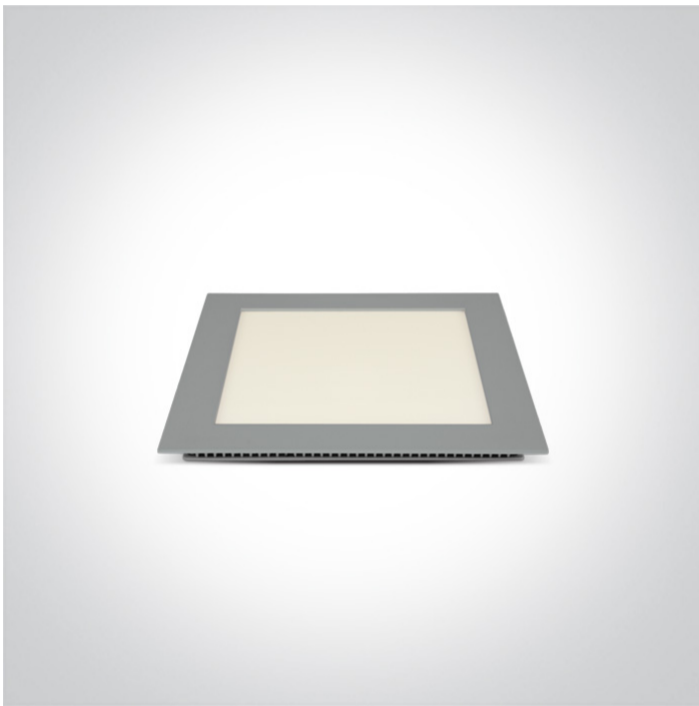


06 Downlights Fixed LED&gt;The 22-30W Square Recessed Panels Die cast

**50122F/G/W**

22W slim downlight LED, IP40, ideal for commercial applications such as offices, galleries and showrooms.

Supplied with 700mA non-dimmable LED driver.

Complies with standard EN60598-1 and any other specific standards.



## Downloads



## Dimensions



## Gallery



## Physical Specification

Item Group

06 Downlights Fixed LED

Family

The 22-30W Square Recessed Panels Die cast

Order Code

50122F/G/W

Colour

Grey

Material

Die Cast

Diffuser Material



Acrylic


Shape

Rectangular

Length	220mm
Width	220mm
Height	20mm
Cutout Hole Width	204mm
Cutout Hole Length	204mm
Recessed Ceiling	Yes
Depth Required	40mm
Indoor	Yes
Adjustable	No


## Electrical Characteristics

Gear	External-Included
Fitting + Driver	
Input Voltage	100-240V
50 Hz	Yes
60 Hz	Yes
Safety Class	
Power(Watts)	22W
IP Rating	IP40
Light Source	LED built in
Dimmable	No
F Mark	

Fitting	
Input Type	Constant Current
Input Current	700mA
Voltage	28V
Safety Class	
Power(Watts)	19,6W
IP Rating	IP40

Light Source	LED built in
LED Type	SMD 2016
LED Brand	Epistar
LED Number	152

## Gear

Gear Type	Led Driver
Input Voltage	100-240V
50 Hz	Yes
60 Hz	Yes
Power(Watts)	16-20W
Power Factor	0,9
Constant Current	Yes
700mA	23-28V
IP Rating	IP20
Safety Class	
Dimmable	No
Ambient Temp	40°C
Operating Temp	85°C
Housing Material	Plastic
Brand	ONE LIGHT Ltd

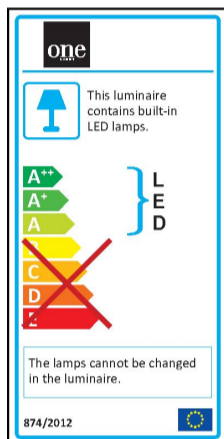
## Illumination Data

Colour Temperature	3000K
Lumen Output	1490lm
Light Efficiency	67,72lm/W
CRI	80
Beam Angle	120°
Illumination Diagram	

## Packing Info

Box Length	29cm
Box Width	22cm
Box Height	3cm
Box Weight	0,85Kg
Pcs/Carton	10
Barcode	5291889039846
HS Code	9405409900

## Energy Label



## Certification &amp; Warranty

Warranty	2 Years
Average Lifetime	30000 hours
Weee Directive	Yes

switch to  
**one light!**

one  
LIGHT

