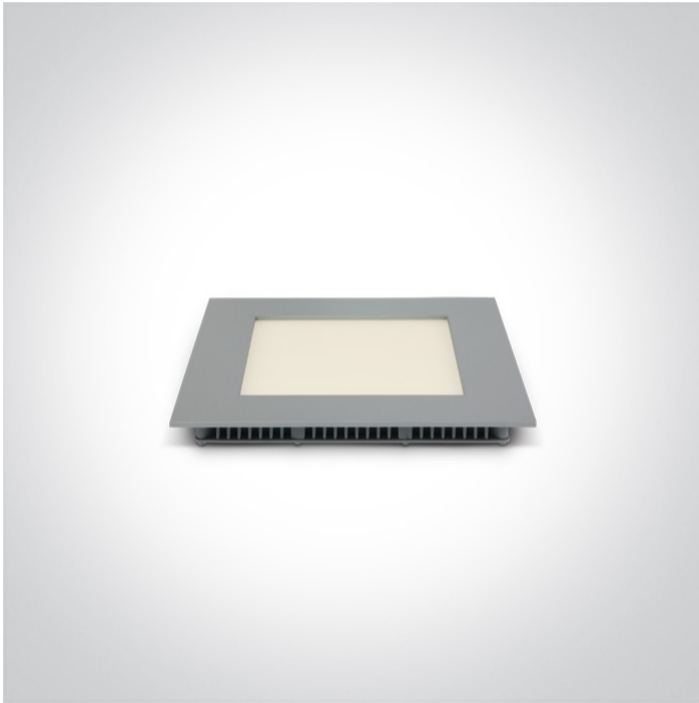


06 Downlights Fixed LED>The 8-16W Square Recessed Panels Die cast

50116FA/G/W

16W slim downlight LED, IP40, ideal for commercial applications such as offices, galleries and showrooms.

Supplied with 350mA non-dimmable LED driver.

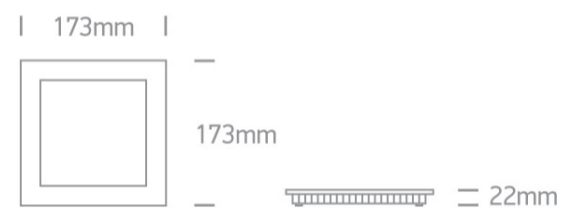
Complies with standard EN60598-1 and any other specific standards.



Downloads



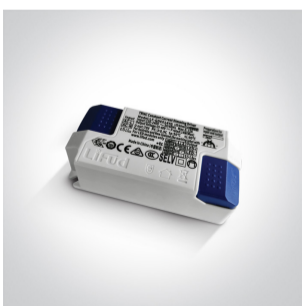
Dimensions



Gallery



Related items



89016UT

Physical Specification

Item Group



06 Downlights Fixed LED

Family


The 8-16W Square Recessed Panels Die cast

Order Code	50116FA/G/W
Colour	Grey
Material	Die Cast
Diffuser Material	Acrylic
Shape	Rectangular
Length	173mm
Width	173mm
Height	22mm
Cutout Hole Width	155mm
Cutout Hole Length	155mm
Recessed Ceiling	Yes
Depth Required	50mm
Indoor	Yes
Adjustable	No


Electrical Characteristics

Gear	External-Included
Fitting + Driver	
Input Voltage	220-240V
50 Hz	Yes
60 Hz	Yes
Safety Class	
Power(Watts)	16W
IP Rating	IP40
Light Source	LED built in
Dimmable	No
F Mark	

Fitting	
Input Type	Constant Current

Input Current	350mA
Voltage	42V
Safety Class	
Power(Watts)	14,7W
IP Rating	IP40
Light Source	LED built in
LED Type	SMD 2835
LED Brand	Epistar
LED Number	84

Gear

Gear Type	Led Driver
Input Voltage	220-240V
50 Hz	Yes
60 Hz	Yes
Power(Watts)	9,5-14,7W
Power Factor	0,6
Constant Current	Yes
350mA	27-42V
IP Rating	IP20
Safety Class	
Dimmable	No
Ambient Temp	50°C
Operating Temp	75°C
Housing Material	Plastic
Brand	Lifud

Illumination Data

Colour Temperature	3000K
Lumen Output	960lm
Light Efficiency	60lm/W

CRI

80

Pobrano z mamadecor.pl

Beam Angle

120°

Illumination Diagram



Packing Info

Box Length

23,6cm

Box Width

18cm

Box Height

18cm

Box Weight

0,460Kg

Pcs/Carton

30

Barcode

5291889044277

HS Code

9405109890

Certification & Warranty

Warranty

2 Years

Average Lifetime

30000 hours

Weee Directive

Yes

switch to
one light!

one
LIGHT

