

INSTALLATION MANUAL

38151A

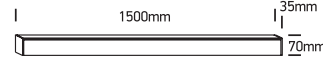
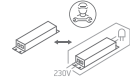
ecolight


UGR19

90 CRI



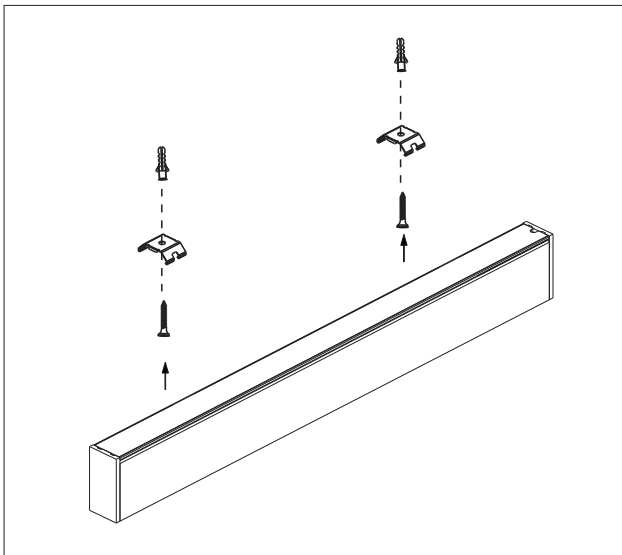
230V | SMD 2835 | 50W | IP20 | Diffuser | Aluminium
 Complete with 1500mA driver / Can be connected in line.



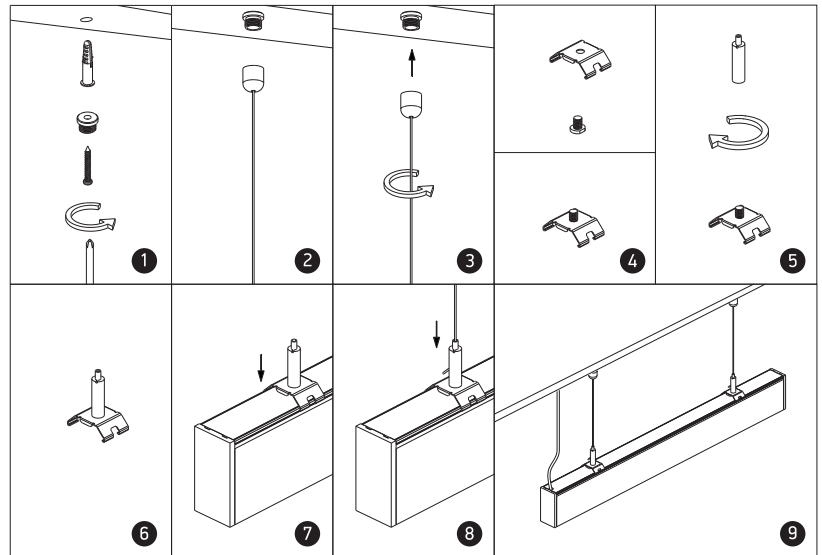
one

LIGHT

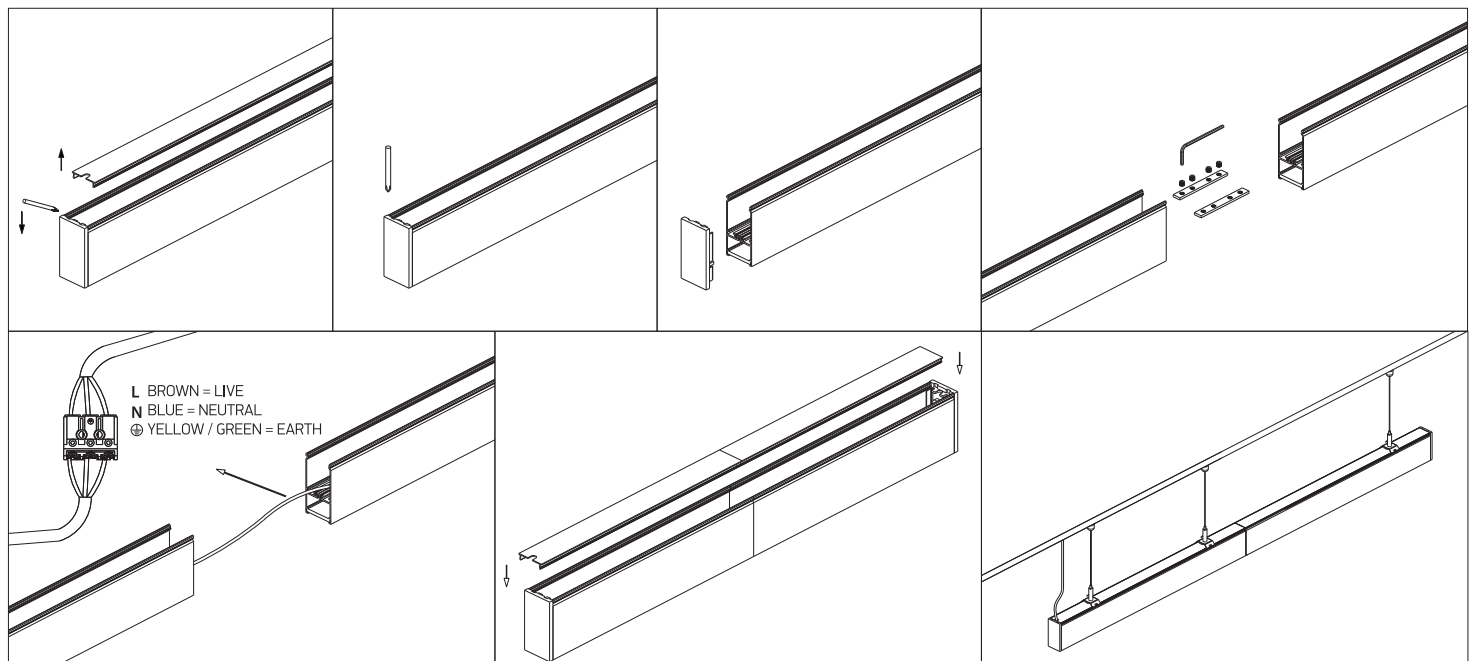
A SURFACE INSTALLATION



B SUSPENDED INSTALLATION



C CONNECTION



Warnings:

1. Make sure that the product is installed properly before connecting to electricity.
2. Do not cover the fitting.
3. Maintenance and installation should only be carried out by a professional electrician.