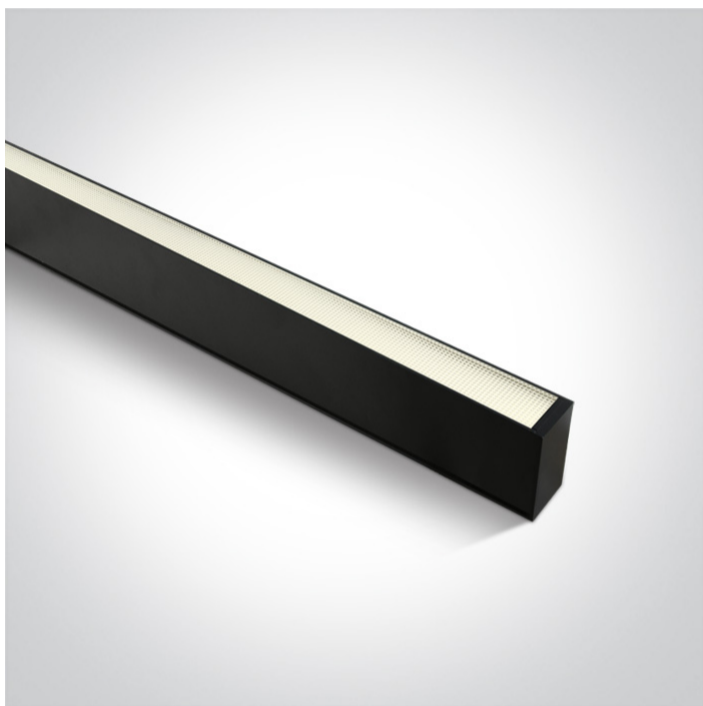


11 Office & Kitchen > LED Linear Profiles Medium size

38151A/B/C



50W UGR19 Linear system with diffuser for surface or suspended installation, ideal for offices.

Complete with 1500mA driver.

Complies with standard EN60598-1 and any other specific standards.



Downloads



Dimensions



Gallery



Accessories



050170



050170C/B





38150E/B

Physical Specification

Item Group	11 Office & Kitchen
Family	LED Linear Profiles Medium size
Order Code	38151A/B/C
Colour	Black
Material	Aluminium
Shape	Rectangular
Length	1500mm
Width	70mm
Height	35mm
Surface Ceiling	Yes
Suspended Ceiling	Yes
Indoor	Yes
Adjustable	No

Electrical Characteristics


Gear	Built In
Fitting + Driver	
Input Voltage	220-240V
50 Hz	Yes
60 Hz	Yes
Safety Class	
Power(Watts)	50W
IP Rating	IP20

Light Source	LED built in
Dimmable	No
Cable Length	300cm
F Mark	


Fitting

Input Type	Constant Current
Input Current	1500mA
Voltage	31V
Power(Watts)	46,5W
IP Rating	IP20
Light Source	LED built in
LED Type	SMD 2835
LED Brand	Epistar

Gear

Gear Type	Led Driver
Input Voltage	220-240V
50 Hz	Yes
60 Hz	Yes
Power(Watts)	45-63W
Power Factor	0,9
Constant Current	Yes
1500mA	30-42V
IP Rating	IP20
Safety Class	
Dimmable	No
Brand	AGT
Protection	0

Illumination Data

Colour Temperature	4000K
Lumen Output	4250lm
Light Efficiency	85lm/W
CRI	90
Beam Angle	120°
Illumination Diagram	
UGR	19

Packing Info

Box Weight	2.420000kg
Pcs/Carton	9
Barcode	5291889070726
HS Code	9405409900

Certification & Warranty

Warranty	3 Years
Weee Directive	Yes

switch to
one light!

one
LIGHT

