

# INSTALLATION MANUAL

## 12606C

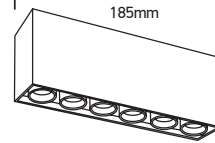
**ecolight**

**DARK  
LIGHT**


35mm

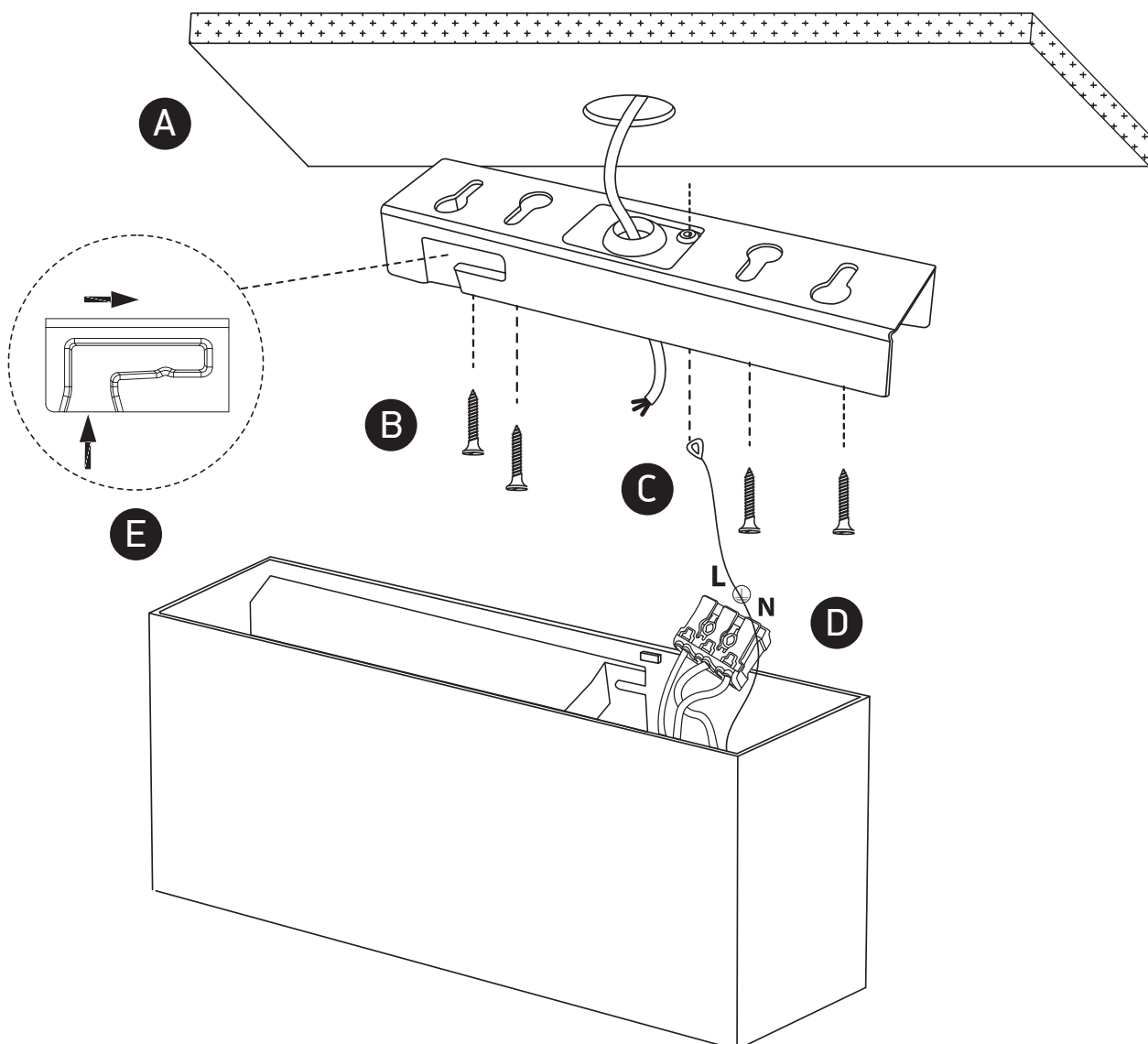
185mm

84mm



230V | SMD 3535 | 15W | IP20 | Aluminium

Complete with 700mA driver.

**85  
CRI**
**one**  
LIGHT


### Warnings:

1. Make sure that the product is installed properly before connecting to electricity.
2. Do not cover the fitting.
3. Maintenance and installation should only be carried out by a professional electrician.