

# INSTALLATION MANUAL

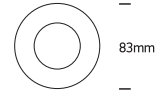
## 10112P

**ecospot**



Ra>80

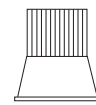
700mA | 12W | IP64 | Die cast  
Requires 700mA driver



83mm



70mm



85mm

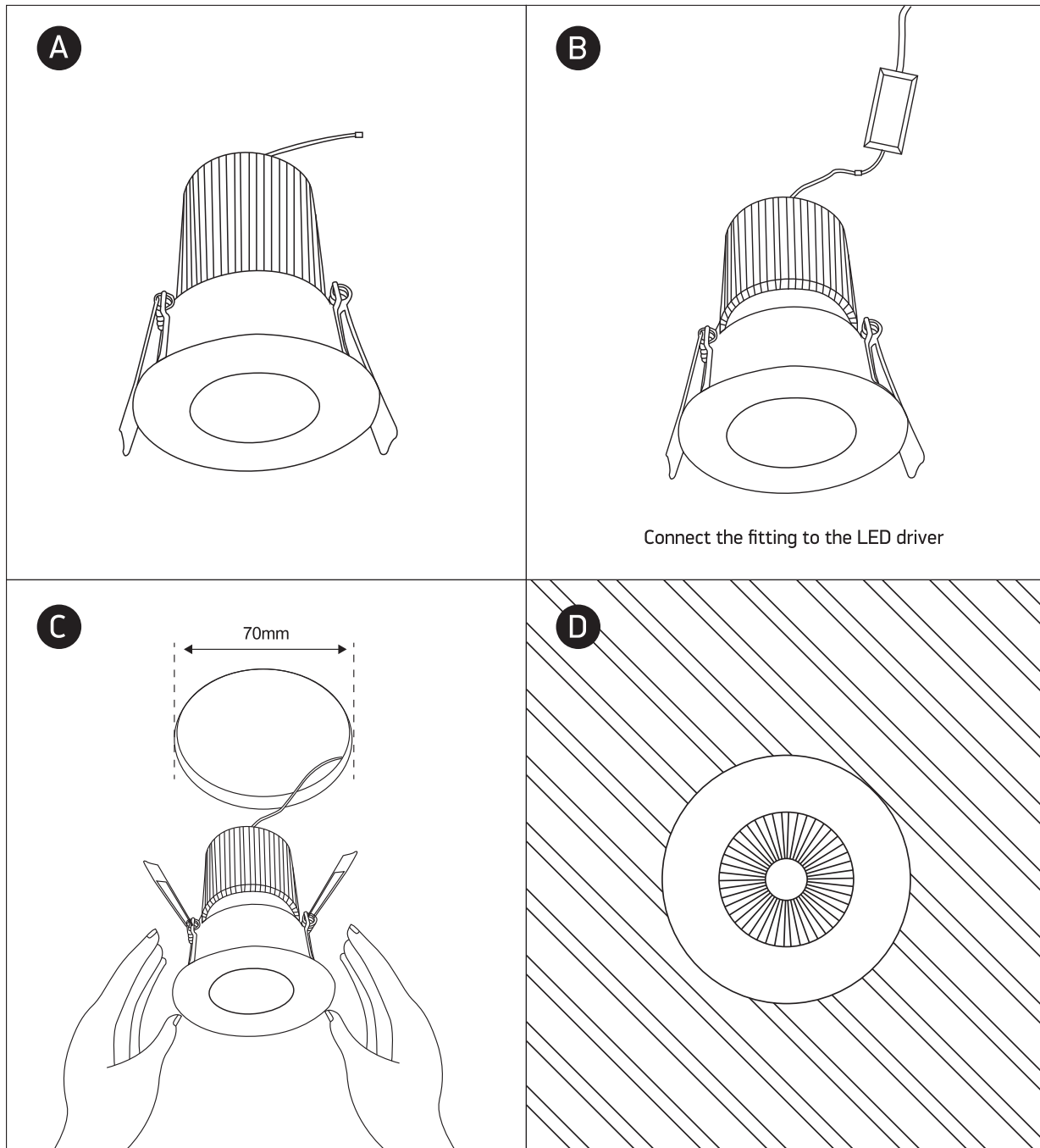


105mm



40cm

**one**  
LIGHT



### Warnings:

1. Make sure that the product is installed properly before connecting to electricity.
2. Do not cover the fitting.
3. Maintenance and installation should only be carried out by a professional electrician.