

06 Downlights Fixed LED&gt;The Budget Downlight Range Aluminium

10107T/W/W



7W SMD LED recessed downlight, budget range, IP20.

Complete with 280mA driver.

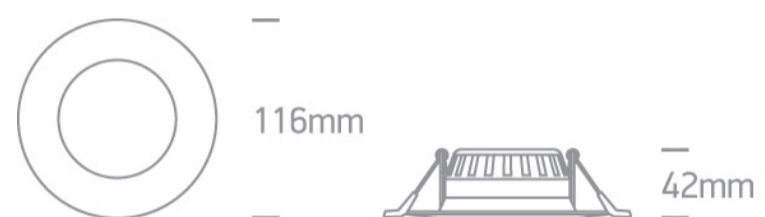
Complies with standard EN60598-1 and any other specific standards.



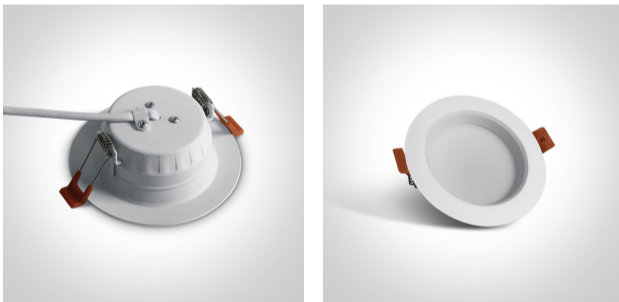
## Downloads



## Dimensions



## Gallery



## Physical Specification

Item Group

06 Downlights Fixed LED

Family

The Budget Downlight Range Aluminium

Order Code

10107T/W/W

Colour

White

Material

Aluminium

Shape



Circular


Height

42mm


Diameter	116mm
Cutout Hole Diameter	85mm
Recessed Ceiling	Yes
Depth Required	60mm
Indoor	Yes
Adjustable	No

## Electrical Characteristics


Gear	External-Included
Fitting + Driver	
Input Voltage	220-240V
50 Hz	Yes
60 Hz	Yes
Safety Class	
Power(Watts)	7W
IP Rating	IP20
Light Source	LED built in
Dimmable	No
F Mark	

Fitting	
Input Type	Constant Current
Input Current	280mA
Voltage	21V
Safety Class	
Power(Watts)	5,9W
IP Rating	IP20
Light Source	LED built in
LED Type	SMD 2835
LED Brand	Sanan

## Gear

Gear Type	Led Driver
Input Voltage	220-240V
50 Hz	Yes
60 Hz	Yes
Power(Watts)	4,2-7W
Power Factor	0,5
Constant Current	Yes
Output	280mA
Voltage Range	15-25V
IP Rating	IP20
Safety Class	
Dimmable	No
Housing Material	Plastic
Output Terminal	Cable
Brand	Kegu

## Illumination Data

Colour Temperature	3000K
Lumen Output	490lm
Light Efficiency	70lm/W
CRI	80
Beam Angle	120°
Illumination Diagram	

## Packing Info

Box Length	12cm
Box Width	12cm

Box Height	6cm
Box Weight	0,190kg
Pcs/Carton	60
Barcode	5291889045779
HS Code	9405409900

#### Certification & Warranty

Warranty	2 Years
Weee Directive	Yes

switch to  
**one light!**

one  
LIGHT

