

04 Recessed Spots Adjustable LED>The Trimless COB Spot Die cast

11107BT/W/W

7W COB LED recessed trimless adjustable spot, suitable for indoor/outdoor applications, IP54.

Requires 700mA constant current LED driver.

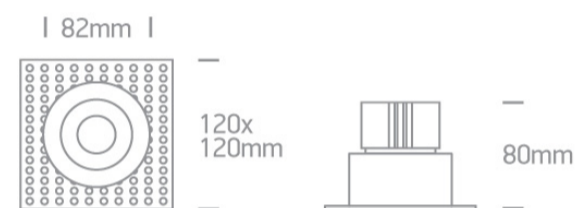
Complies with standard EN60598-1 and any other specific standards.



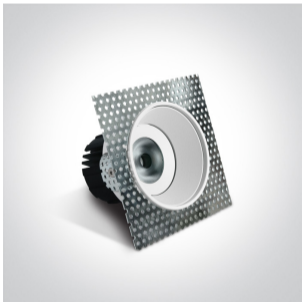
Downloads



Dimensions



Gallery



Must be ordered separately



89015A



89015AT

Physical Specification

| | |
|---------------------------|----------------------------------|
| Item Group | 04 Recessed Spots Adjustable LED |
| Family | The Trimless COB Spot Die cast |
| Order Code | 11107BT/W/W |
| Colour | White |
| Material | Die Cast |
| Shape | Rectangular |
| Length | 120mm |
| Width | 120mm |
| Height | 80mm |
| Cutout Hole Diameter | 96mm |
| Recessed trimless ceiling | Yes |
| Depth Required | 105mm |
| Indoor | Yes |
| Outdoor | Yes |
| Adjustable | 2 Directions |


Electrical Characteristics

Fitting

| | |
|---------------|------------------|
| Input Type | Constant Current |
| Input Current | 700mA |
| Voltage | 10V |
| Safety Class | III |
| Power(Watts) | 7W |

| | |
|--------------|---|
| IP Rating | IP54 |
| Light Source | LED built in |
| LED Type | COB |
| LED Brand | Bridgelux |
| LED Number | 1 |
| Cable Length | 40cm |
| F Mark |  |

Illumination Data

| | |
|----------------------|---|
| Colour Temperature | 3000K |
| Lumen Output | 500lm |
| Light Efficiency | 71,42lm/W |
| CRI | 90 |
| Beam Angle | 38° |
| Illumination Diagram |  |
| Dark Light | Yes |

Packing Info

| | |
|------------|---------------|
| Box Length | 13cm |
| Box Width | 13cm |
| Box Height | 8cm |
| Box Weight | 0,45Kg |
| Pcs/Carton | 30 |
| Barcode | 5291889046998 |
| HS Code | 9405409900 |

Certification & Warranty

| | |
|------------------|------------|
| Warranty | 5 Years |
| Average Lifetime | 40000hours |
| Weee Directive | Yes |

switch to
one light!

one
LIGHT

