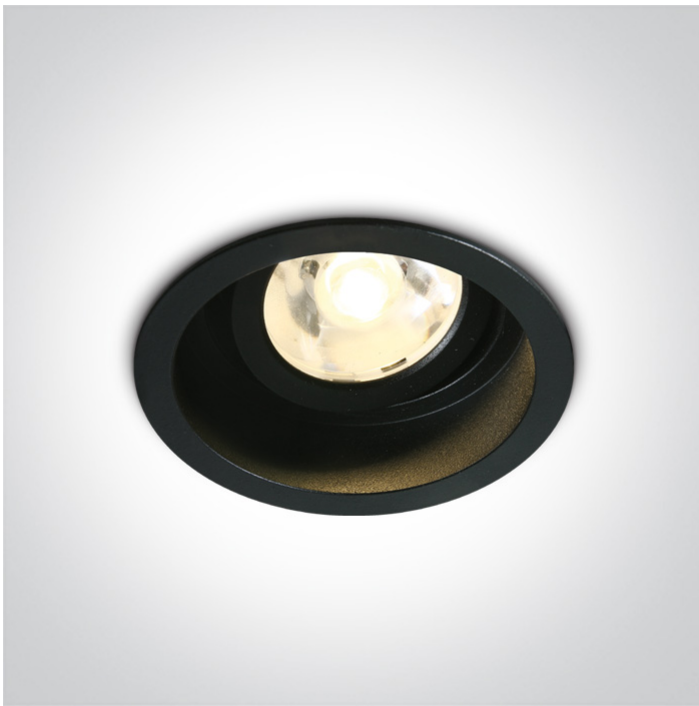


04 Recessed Spots Adjustable LED>The Super Narrow Beam

11106DB/B/W



6W LED recessed adjustable spot, IP20.

Requires 500mA driver.

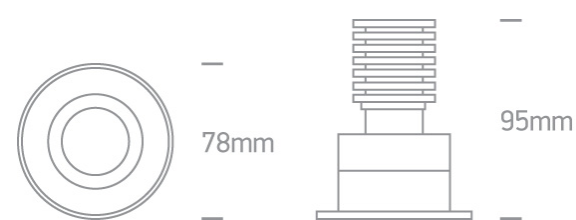
Complies with standard EN60598-1 and any other specific standards.



Downloads



Dimensions





Physical Specification


| | |
|----------------------|----------------------------------|
| Item Group | 04 Recessed Spots Adjustable LED |
| Family | The Super Narrow Beam |
| Order Code | 11106DB/B/W |
| Colour | Black |
| Material | Die Cast |
| Shape | Circular |
| Height | 95mm |
| Diameter | 78mm |
| Cutout Hole Diameter | 68mm |
| Recessed Ceiling | Yes |
| Depth Required | 110mm |
| Indoor | Yes |

Electrical Characteristics

Fitting

| | |
|---------------|---|
| Input Type | Constant Current |
| Input Current | 500mA |
| Voltage | 12V |
| Safety Class |  |
| Power(Watts) | 8W |
| IP Rating | IP20 |
| Light Source | LED built in |
| LED Type | COB |
| LED Brand | Cree |
| Cable Length | 20cm |
| F Mark |  |

Illumination Data

| | |
|----------------------|---|
| Colour Temperature | 3000K |
| Lumen Output | 540lm |
| Light Efficiency | 90lm/W |
| CRI | 80 |
| Beam Angle | 4° |
| Illumination Diagram |  |
| Dark Light | Yes |

Packing Info

| | |
|------------|---------------|
| Pcs/Carton | 30 |
| Barcode | 5291889060826 |
| HS Code | 9405409900 |

Certification & Warranty

Warranty

3 Years

Weee Directive

Yes

switch to
one light!

one
LIGHT

