

06 Downlights Fixed LED>Architectural Downlights Die cast

10128/G/W



28W LED architectural downlight, IP20.

Complete with LED driver.

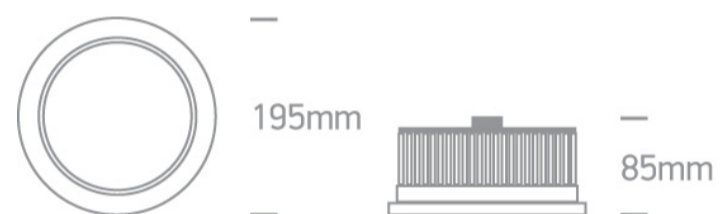
Complies with standard EN60598-1 and any other specific standards.



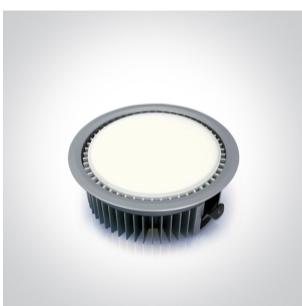
Downloads



Dimensions



Gallery



Physical Specification

Item Group

06 Downlights Fixed LED

Family

Architectural Downlights Die cast

Order Code

10128/G/W

Colour

Grey

Material

Die Cast

Diffuser Material



Acrylic

Shape

Circular

Height	85mm
Diameter	195mm
Cutout Hole Diameter	169mm
Recessed Ceiling	Yes
Depth Required	110mm
Indoor	Yes
Adjustable	No

Electrical Characteristics

Gear	Built In
Fitting + Driver	
Input Voltage	220-240V
50 Hz	Yes
60 Hz	Yes
Safety Class	
Power(Watts)	28W
IP Rating	IP20
Light Source	LED built in
Dimmable	No
F Mark	

Fitting	
Input Type	Constant Current
IP Rating	IP20
Light Source	LED built in

Gear	
Gear Type	Led Driver
Input Voltage	220-240V
50 Hz	Yes

60 Hz	Yes
IP Rating	IP20
Safety Class	
Dimmable	No
Housing Material	Plastic
Brand	One Light

Illumination Data

Colour Temperature	3000K
Lumen Output	1150lm
Light Efficiency	41lm/W
CRI	80
Beam Angle	90°
Illumination Diagram	

Packing Info

Box Length	25cm
Box Width	21,5cm
Box Height	11,5cm
Pcs/Carton	10
Barcode	5291889027393
HS Code	9405409900

Certification & Warranty

Warranty

2 Years

Pobrano z mamadecor.pl

Weee Directive

Yes

switch to
one light!

one
LIGHT

