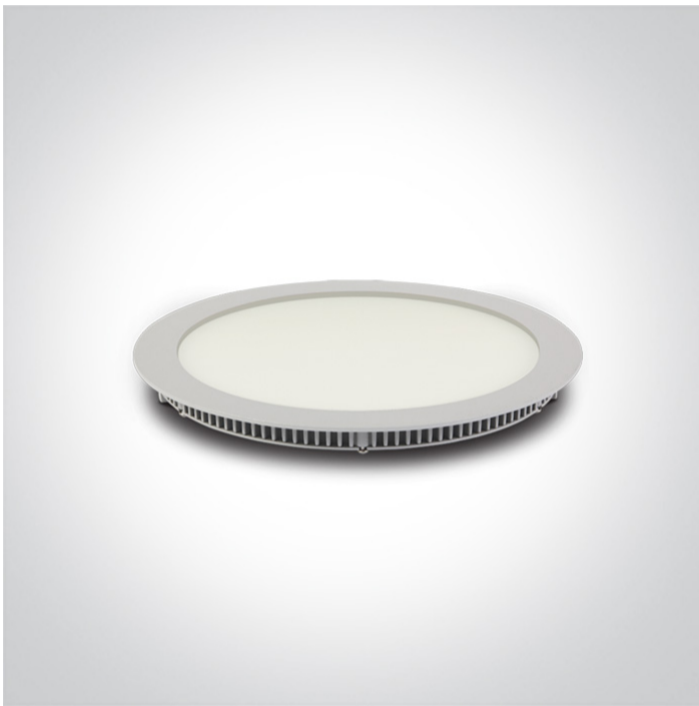


06 Downlights Fixed LED>The 18-30W Round Recessed Panels Die cast

10130FA/W/C

30W slim downlight LED, IP40, ideal for commercial applications such as offices, galleries and showrooms.

Supplied with 700mA non-dimmable LED driver.

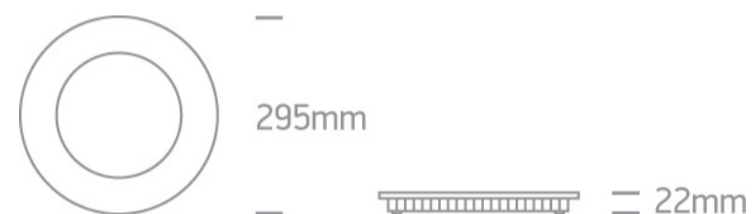
Complies with standard EN60598-1 and any other specific standards.



Downloads



Dimensions



Gallery



Physical Specification

Item Group

06 Downlights Fixed LED

Family

The 18-30W Round Recessed Panels Die cast

Order Code

10130FA/W/C

Colour

White

Material

Die Cast

Diffuser Material



Acrylic


Shape

Circular

Height	22mm
Diameter	295mm
Cutout Hole Diameter	285mm
Recessed Ceiling	Yes
Depth Required	50mm
Indoor	Yes
Adjustable	No

Electrical Characteristics

Gear	External-Included
Fitting + Driver	
Input Voltage	220-240V
50 Hz	Yes
60 Hz	Yes
Safety Class	
Power(Watts)	30W
IP Rating	IP40
Light Source	LED built in
Dimmable	No
F Mark	

Fitting	
Input Type	Constant Current
Input Current	700mA
Voltage	34,7V
Safety Class	
Power(Watts)	24,3W
IP Rating	IP40
Light Source	LED built in
LED Type	SMD 2835

LED Brand

Epistar

Pobrano z mamadecor.pl

LED Number

144

Gear

Gear Type

Led Driver

Input Voltage

220-240V

50 Hz

Yes

60 Hz

Yes

Power(Watts)

30W

Power Factor

0,9

Constant Current

Yes

700mA

27-42V

IP Rating

IP20

Safety Class



Dimmable

No

Ambient Temp

50°C

Operating Temp

75°C

Housing Material

Plastic

Brand

Lifud

Illumination Data

Colour Temperature

4000K

Lumen Output

2100lm

Light Efficiency

70lm/W

CRI

80

Beam Angle

120°

Illumination Diagram



Packing Info

Box Length

35,5cm

Box Width	31cm
Box Height	4cm
Box Weight	0,970Kg
Pcs/Carton	15
Barcode	5291889044178
HS Code	9405109890

Certification & Warranty

Warranty	2 Years
Average Lifetime	30000 hours
Weee Directive	Yes

switch to
one light!

one
LIGHT

