

## 06 Downlights Fixed LED > UGR19 Adjustable CCT Range

# 10120UV/W



20W SMD LED UGR19 downlight with adjustable CCT, IP44.

Complete with Non-flickering 550mA driver.

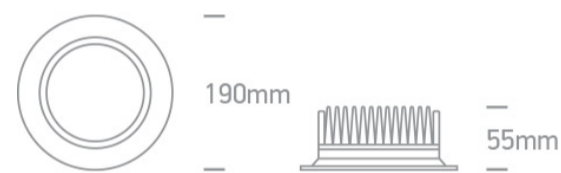
Complies with standard EN60598-1 and any other specific standards.



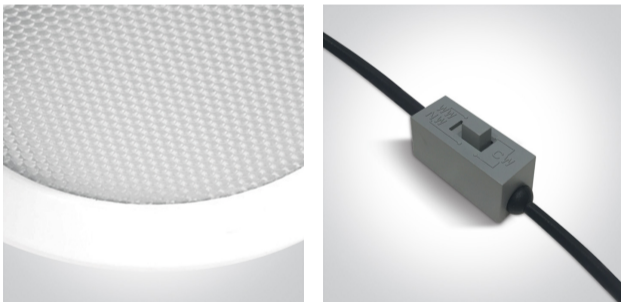
### Downloads



### Dimensions



### Gallery



### Physical Specification

Item Group

06 Downlights Fixed LED

Family

UGR19 Adjustable CCT Range

Order Code

10120UV/W

Colour

White

Material

Die Cast

Shape



Circular

Height


55mm

Diameter	190mm
Cutout Hole Diameter	170mm
Recessed Ceiling	Yes
Depth Required	75mm
Indoor	Yes
Adjustable	No


## Electrical Characteristics

Gear	External-Included
Fitting + Driver	
Input Voltage	220-240V
50 Hz	Yes
60 Hz	Yes
Safety Class	
Power(Watts)	20W
IP Rating	IP44
Light Source	LED built in
Dimmable	No
F Mark	

## Fitting

Input Type	Constant Current
Input Current	550mA
Voltage	36V
Safety Class	
Power(Watts)	19,8W
IP Rating	IP44
Light Source	LED built in
LED Type	SMD 2835
LED Brand	Epistar

## Gear

Gear Type	Led Driver
Input Voltage	220-240V
50 Hz	Yes
60 Hz	Yes
Power(Watts)	13,75-22W
Power Factor	0,9
Constant Current	Yes
550mA	25-40V
IP Rating	IP44
Safety Class	
Dimmable	No
Housing Material	Plastic
Output Terminal	Cable
Brand	Lifud
Protection	Short Circuit and Overload

## Illumination Data

Colour Temperature	3000K-4000K-6000K
Lumen Output	1500lm
Light Efficiency	75lm/W
CRI	80
Illumination Diagram	
UGR	19

## Packing Info

Box Weight	0.615kg
Pcs/Carton	20

Barcode

5291889065319

Pobrano z mamadecor.pl

HS Code

9405413990

## Certification & Warranty

Warranty

3 years

Weee Directive

Yes

switch to  
**one light!**

one  
LIGHT

