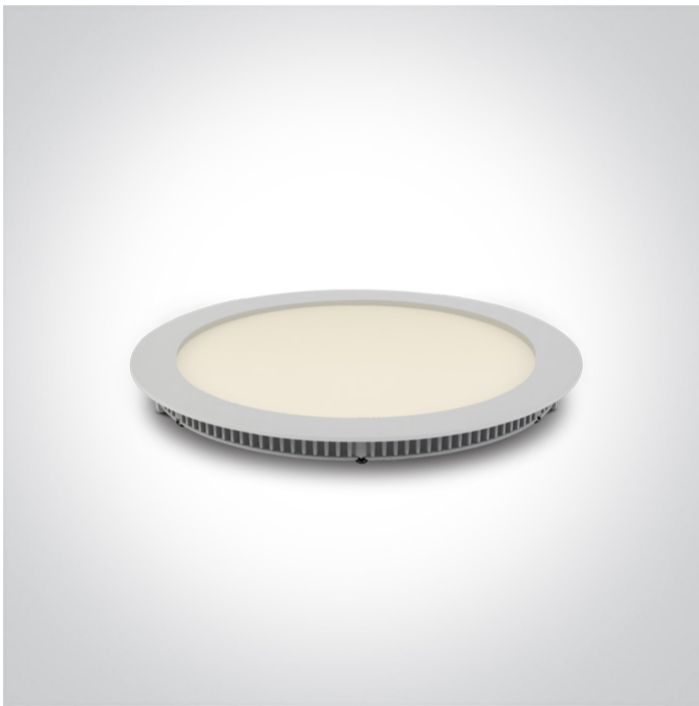


06 Downlights Fixed LED>The 18-30W Round Recessed Panels Die cast

10118FA/W/D

18W slim downlight LED, IP40, ideal for commercial applications such as offices, galleries and showrooms.

Supplied with 450mA non-dimmable LED driver.

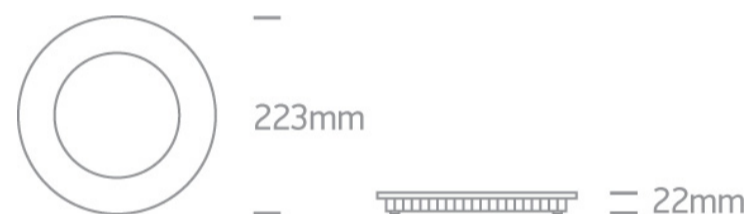
Complies with standard EN60598-1 and any other specific standards.



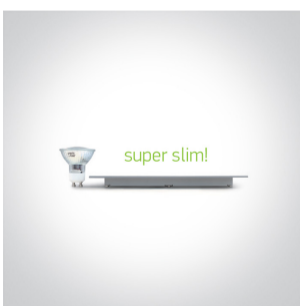
Downloads



Dimensions



Gallery



Related items



89024UT

Physical Specification

Item Group



06 Downlights Fixed LED

Family

The 18-30W Round Recessed Panels Die cast

Order Code	10118FA/W/D
Colour	White
Material	Die Cast
Diffuser Material	Acrylic
Shape	Circular
Height	22mm
Diameter	223mm
Cutout Hole Diameter	210mm
Recessed Ceiling	Yes
Depth Required	50mm
Indoor	Yes
Adjustable	No

Electrical Characteristics

Gear	External-Included
Fitting + Driver	
Input Voltage	220-240V
50 Hz	Yes
60 Hz	Yes
Safety Class	
Power(Watts)	18W
IP Rating	IP40
Light Source	LED built in
Dimmable	No
F Mark	

Fitting

Input Type	Constant Current
Input Current	450mA
Voltage	38V



Safety Class	III
Power(Watts)	17,1W
IP Rating	IP40
Light Source	LED built in
LED Type	SMD 2835
LED Brand	Epistar
LED Number	96

Gear

Gear Type	Led Driver
Input Voltage	220-240V
50 Hz	Yes
60 Hz	Yes
Power(Watts)	12,1-19W
Power Factor	0,9
Constant Current	Yes
450mA	27-42V
IP Rating	IP20
Safety Class	
Dimmable	No
Ambient Temp	50°C
Operating Temp	75°C
Housing Material	Plastic
Brand	Lifud

Illumination Data

Colour Temperature	6000K
Lumen Output	1260lm
Light Efficiency	70lm/W
CRI	80
Beam Angle	120°



Packing Info

Box Length	28cm
Box Width	23,5cm
Box Height	3,5cm
Box Weight	0,575Kg
Pcs/Carton	20
Barcode	5291889042778
HS Code	9405109890

Certification & Warranty

Warranty	2 Years
Average Lifetime	30000 hours
Weee Directive	Yes

switch to
one light!

one
LIGHT

