

# INSTALLATION MANUAL

## 10112H

**ecolight**

**DARK  
LIGHT**
**80  
CRI**

700mA | 12W | IP20 | Aluminium

Requires 700mA driver.



100mm



87mm



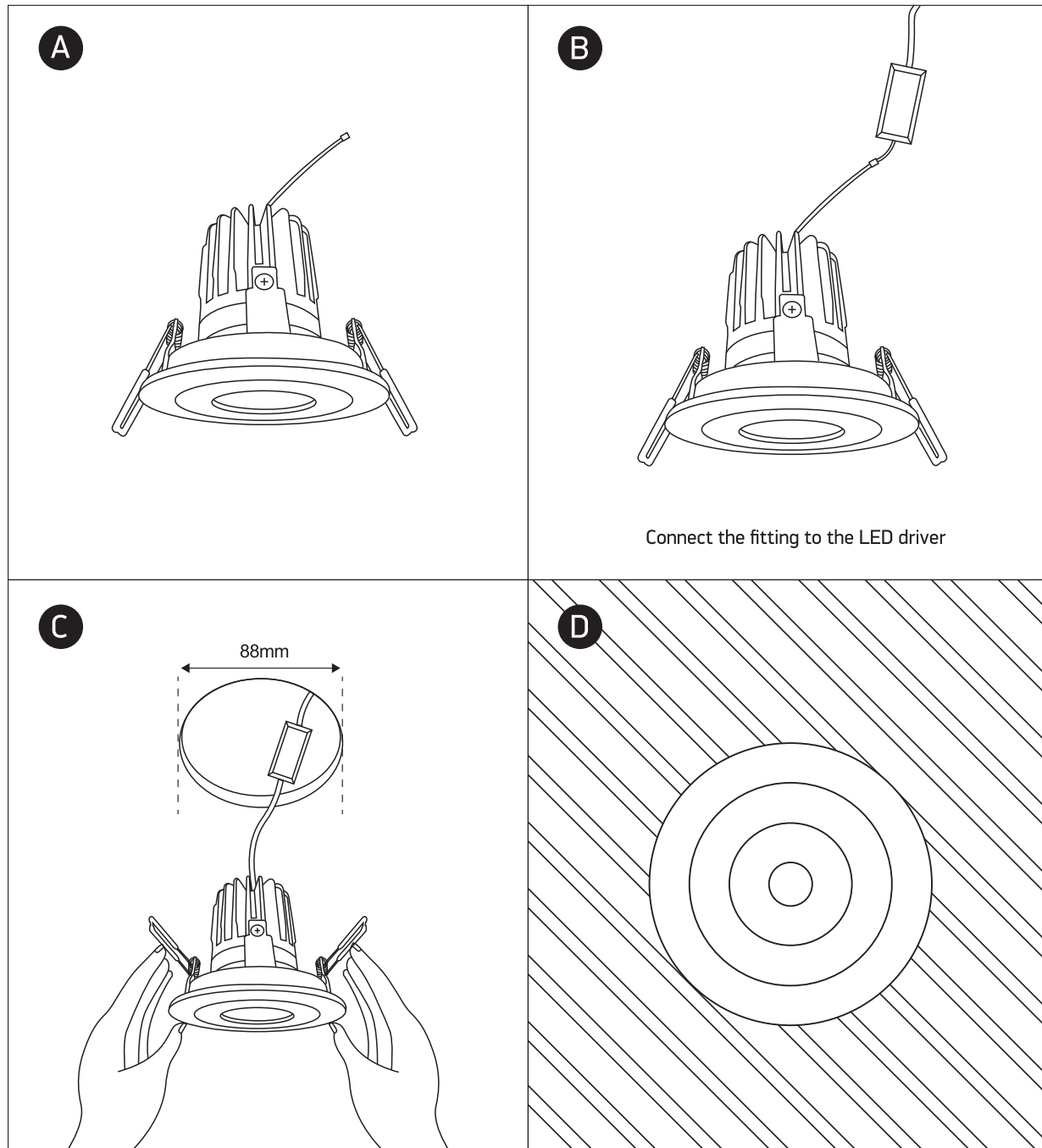
89mm



100mm



40cm

**one**  
LIGHT


### Warnings:

1. Make sure that the product is installed properly before connecting to electricity.
2. Do not cover the fitting.
3. Maintenance and installation should only be carried out by a professional electrician.