

06 Downlights Fixed LED&gt;The Budget Downlight Range Aluminium

10107T/W/C



7W SMD LED recessed downlight, budget range, IP20.

Complete with 280mA driver.

Complies with standard EN60598-1 and any other specific standards.



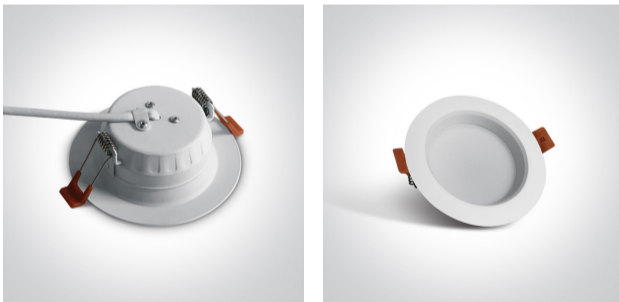
## Downloads



## Dimensions



## Gallery



## Physical Specification

Item Group

06 Downlights Fixed LED

Family

The Budget Downlight Range Aluminium

Order Code

10107T/W/C

Colour

White

Material

Aluminium

Shape



Circular


Height

42mm

|                      |       |
|----------------------|-------|
| Diameter             | 116mm |
| Cutout Hole Diameter | 85mm  |
| Recessed Ceiling     | Yes   |
| Depth Required       | 60mm  |
| Indoor               | Yes   |
| Adjustable           | No    |

## Electrical Characteristics


| Gear             | External-Included   |
|------------------|---|
| Fitting + Driver |   |
| Input Voltage    | 220-240V  |
| 50 Hz            | Yes   |
| 60 Hz            | Yes   |
| Safety Class     |  |
| Power(Watts)     | 7W  |
| IP Rating        | IP20  |
| Light Source     | LED built in  |
| Dimmable         | No  |
| F Mark           |  |

| Fitting       |   |
|---------------|---|
| Input Type    | Constant Current  |
| Input Current | 280mA   |
| Voltage       | 21V   |
| Safety Class  |  |
| Power(Watts)  | 5,9W  |
| IP Rating     | IP20  |
| Light Source  | LED built in  |
| LED Type      | SMD 2835  |
| LED Brand     | Sanan   |

## Gear

|                  |   |
|------------------|---|
| Gear Type        | Led Driver  |
| Input Voltage    | 220-240V  |
| 50 Hz            | Yes   |
| 60 Hz            | Yes   |
| Power(Watts)     | 4,2-7W  |
| Power Factor     | 0,5   |
| Constant Current | Yes   |
| Output           | 280mA   |
| Voltage Range    | 15-25V  |
| IP Rating        | IP20  |
| Safety Class     |  |
| Dimmable         | No  |
| Housing Material | Plastic   |
| Output Terminal  | Cable   |
| Brand            | Kegu  |

## Illumination Data

|                      |   |
|----------------------|---|
| Colour Temperature   | 4000K   |
| Lumen Output         | 520lm   |
| Light Efficiency     | 74,3lm/W  |
| CRI                  | 80  |
| Beam Angle           | 120°  |
| Illumination Diagram |  |

## Packing Info

|            |      |
|------------|------|
| Box Length | 12cm |
| Box Width  | 12cm |

|            |               |
|------------|---------------|
| Box Height | 6cm           |
| Box Weight | 0,190kg       |
| Pcs/Carton | 60            |
| Barcode    | 5291889045786 |
| HS Code    | 9405409900    |

#### Certification & Warranty

|                |         |
|----------------|---------|
| Warranty       | 2 Years |
| Weee Directive | Yes     |

switch to  
**one light!**

one  
LIGHT

