

02 Recessed Spots Fixed LED>The Fire Rated IP65 Range

10107DF/W



7W COB LED Fire Rated recessed Spot, IP65.

Supplied with Triac dimmable LED driver.

Complete with white ring.

Complies with standard EN60598-1 and any other specific standards.



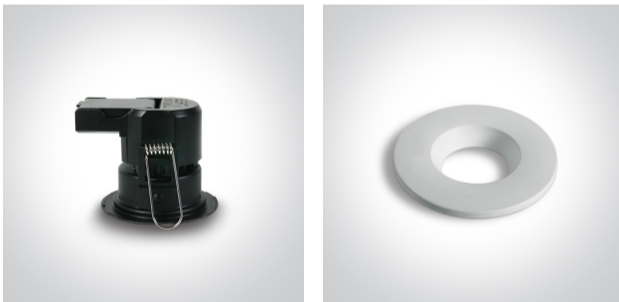
Downloads



Dimensions



Gallery



Related items



050178/B

050178/C

Physical Specification

Item Group



02 Recessed Spots Fixed LED

Family

The Fire Rated IP65 Range


Order Code	10107DF/W
Colour	White
Material	Metal
Shape	Circular
Height	65mm
Diameter	78mm
Cutout Hole Diameter	65mm
Recessed Ceiling	Yes
Depth Required	80mm
Indoor	Yes
Outdoor	Yes
Adjustable	No

Electrical Characteristics


Gear	Built In
Fitting + Driver	
Input Voltage	220-240V
50 Hz	Yes
60 Hz	Yes
Safety Class	
Power(Watts)	7W
IP Rating	IP65
Light Source	LED built in
Dimmable	Yes
Dimmer type	Triac
F Mark	

Fitting


Input Type	Constant Current
Power(Watts)	7W

IP Rating	IP65
Light Source	LED built in
LED Type	SMD
F Mark	

Gear

Gear Type	Led Driver
Input Voltage	220-240V
50 Hz	Yes
60 Hz	Yes
IP Rating	IP20
Safety Class	
Output Terminal	Connector

Illumination Data

Colour Temperature	3000K
Lumen Output	500lm
Light Efficiency	71,42lm/W
CRI	80
Beam Angle	60°
Illumination Diagram	

Packing Info

Pcs/Carton	36
Barcode	5291889063193
HS Code	9405409900

Certification & Warranty

Warranty

3 Years

Weee Directive

Yes

switch to
one light!

one
LIGHT

