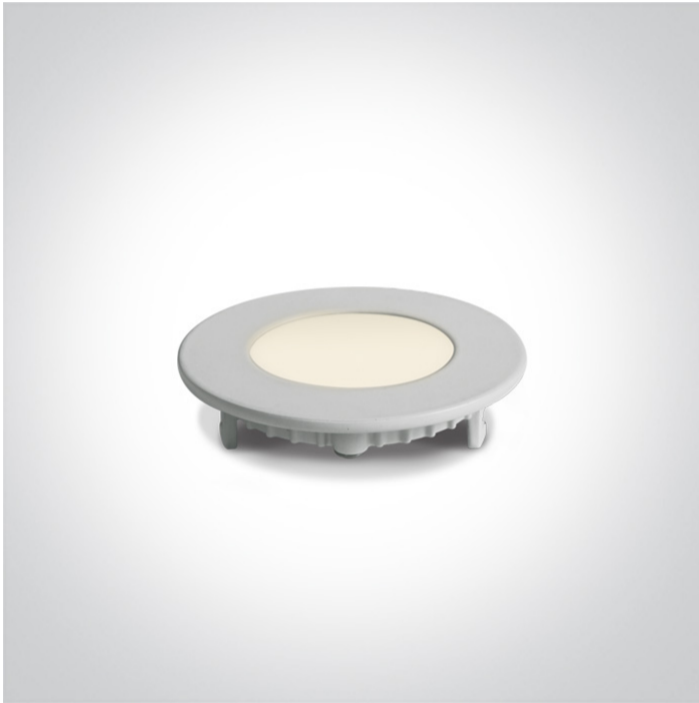


06 Downlights Fixed LED&gt;The 3-12W Round Recessed Panels Die cast

10103FA/W/D



3W slim downlight LED, IP40, ideal for commercial applications such as offices, galleries and showrooms.

Supplied with 300mA non-dimmable LED driver.

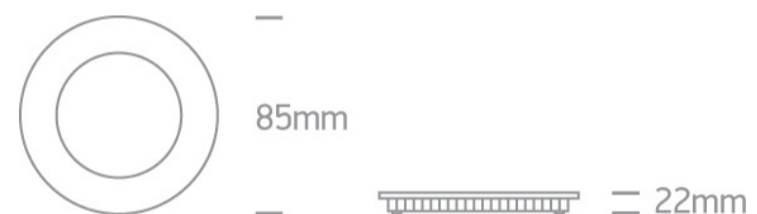
Complies with standard EN60598-1 and any other specific standards.



## Downloads



## Dimensions



## Gallery



## Physical Specification

Item Group

06 Downlights Fixed LED

Family

The 3-12W Round Recessed Panels Die cast

Order Code

10103FA/W/D

Colour

White

Material

Die Cast

Diffuser Material



Acrylic


Shape

Circular

Height	22mm
Diameter	85mm
Cutout Hole Diameter	70mm
Recessed Ceiling	Yes
Depth Required	50mm
Indoor	Yes
Adjustable	No

## Electrical Characteristics

Gear	External-Included
Fitting + Driver	
Input Voltage	220-240V
50 Hz	Yes
60 Hz	Yes
Safety Class	
Power(Watts)	3W
IP Rating	IP40
Light Source	LED built in
Dimmable	No
F Mark	

Fitting	
Input Type	Constant Current
Input Current	300mA
Voltage	9V
Safety Class	
Power(Watts)	2,7W
IP Rating	IP40
Light Source	LED built in
LED Type	SMD 2835

LED Brand

Epistar

Pobrano z mamadecor.pl

LED Number

15

## Gear

Gear Type

Led Driver

Input Voltage

220-240V

50 Hz

Yes

60 Hz

Yes

Power(Watts)

2,4-3,6W

Power Factor

0,6

Constant Current

Yes

300mA

8-12V DC

IP Rating

IP20

Safety Class



Dimmable

No

Ambient Temp

50°C

Operating Temp

75°C

Housing Material

Plastic

Brand

Lifud

## Illumination Data

Colour Temperature

6000K

Lumen Output

210lm

Light Efficiency

70lm/W

CRI

80

Beam Angle

120°

Illumination Diagram



## Packing Info

Box Length

14,2cm

Box Width	3,1cm
Box Height	4cm
Box Weight	0,170Kg
Pcs/Carton	60
Barcode	5291889042723
HS Code	9405109890

#### Certification & Warranty

Warranty	2 Years
Average Lifetime	30000 hours
Weee Directive	Yes

switch to  
**one light!**

one  
LIGHT

