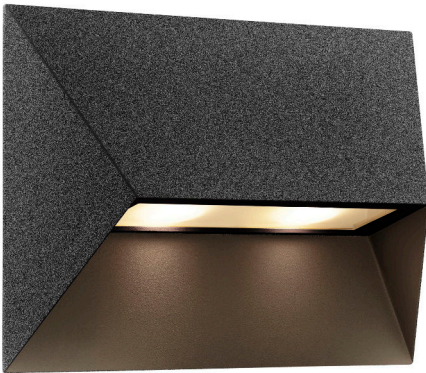


**PONTIO 27 | WALL LIGHT | BLACK**

2218191003

**nordlux®**

Voltage (V): 220-240 Volt  
 IP degree: IP54  
 Maximum bulb wattage (W): 25W  
 Class (Class 1, Class 2, Class 3):  
 Class 1 (Earth contact)  
 Bulb base: GU10  
 Parallel connection: True

Height (cm): 19  
 Width (cm): 27  
 Length (cm): 27  
 EAN: 5704924010880  
 TUN: 2276902  
 Item Number: 2218191003

Pcs Per Master Carton: 3  
 Sales Box Height (cm): 28.5  
 Sales Box Width (cm): 20.5  
 Sales Box Depth (cm): 10.5  
 Sales Box Volume m<sup>3</sup> : 0.0061  
 Product net weight (kg): 1.1

Primary material: Aluminium  
 Suitable for Seaside: No  
 Color: Black

- Architectural design • Parallel connection possible
- Double sockets for extra light output • Space for house number or resident text

Pontio is a series of outdoor lights by Danish design duo Says Who in a streamlined, architectural design. The geometric shape adds a modern, yet timeless expression to your home - while the oblique shade provides a unique and interesting look from all angles. The large, illuminated plate is the perfect place to highlight the resident's house number or names. Matte, slightly textured surface in painted aluminium.