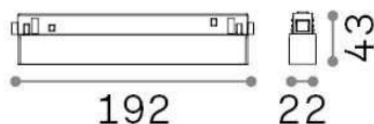
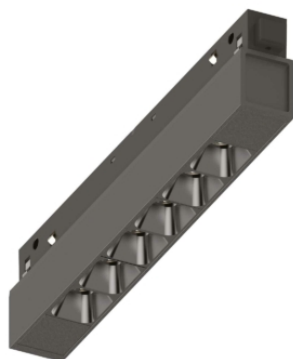


Ego



General info

Technical - Linear system

Indoor track mounted dimmable linear fitting with integrated LED sources and direct light emission

Ean	8021696286051
Item	EGO ACCENT 07W 3000K DALI BK
Installation	Ego profile
Guarantee	5 years
Gross weight	0.29 kg
Volume	0.001254 m ³

Technical info

Net weight	0.14 kg
Insulation class	III
Protection index	IP20
Operating temperature	0° ~ +40 °C
Dimmer	Dimmable, DALI
Power output	48 V DC
Power supply	Required, remoted, not included NO, elettronico
Adjustability	vert. 0°-90°
Accessories not included	Ego profile

Source info

Integrated source	Integrated LED module
Replaceable source	YES (by qualified operators only)
Power	7W
Emission	Direct
Max consumption	max 7,00 W
Features LED	LED SMD OSRAM
CCT	3000 K
Duration LED (t. 25°C)	50000 h
CRI	> 90
SDCM	3
Light beam	35°
UGR Maximum	< 19
Light beam flux	700 lm
Useful light flux	590 lm
Photobiological risk	1
Standby power	< 0.50