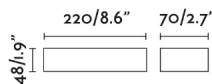
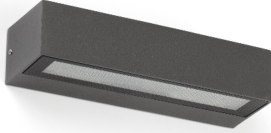


LAKO is a wall lamp for outdoor lighting, made of die cast aluminium and glass diffuser. This dark grey wall lamp with LED technology features IP65 that gives high protection against rain and solids. The light is projected 90° to one side only.



## General characteristics

Fixation	Wall
Type	I
IP	65
voltage	220V-240V
Hertz	50/60Hz
Power	8W


## Material

Body/Structure	Aluminium
Diffuser	Glass

## Finish

Body/Structure	Dark Grey
Diffuser	Prism

## Lighting characteristics

Light source included	Yes
Temperature	3000K
	
LM	600lm
CRI	>80
Degrees of light aperture	90°
Light direction	Indirect lighting
Energy classification	F

## Driver

Requires Driver	Yes
Driver embedded	Yes

## File download

General documents	Download >
Images	Download >
2D / 3D	Download >
	Download >
BIM	Download >

