



IL936


R7s CURVED GLASS PENDANT FITTING INSTALLATION INSTRUCTIONS

These instructions are provided for your safety.

Please read carefully before commencing work and retain for future reference.

**IT IS RECOMMENDED THAT YOU OBTAIN ASSISTANCE WHEN FITTING THIS PRODUCT
WARNING: THIS IS NOT A RISE AND FALL, HEIGHT OF THIS FITTING MUST BE SET DURING INSTALLATION.**

SAFETY INFORMATION

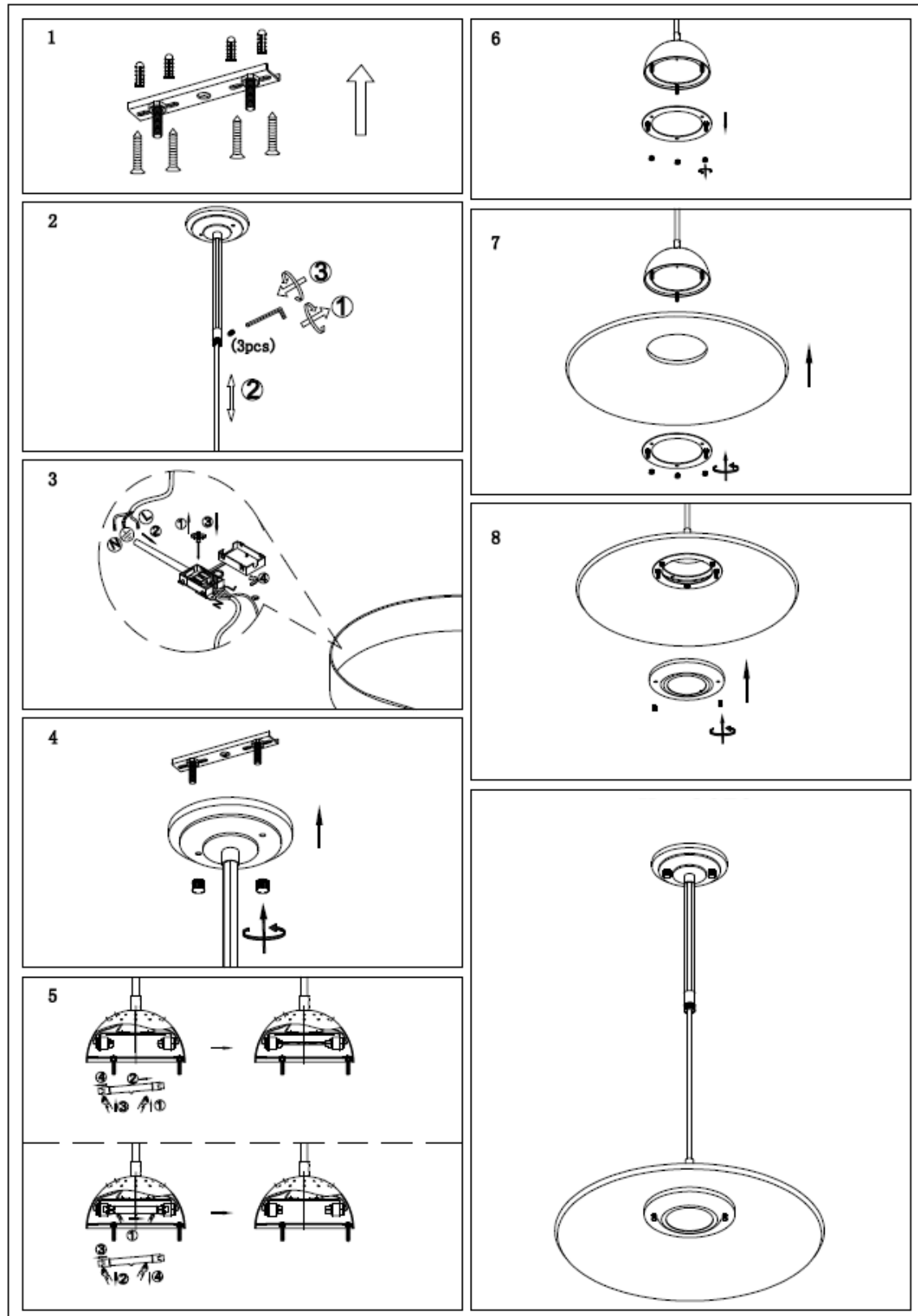
- * If you are in any doubt consult a person competent to give advice on the installation of electrical equipment.
- * This fitting should be fitted in accordance with IEE Wiring Regulations and the Building Regulations
- * To prevent electrocution switch off at the mains supply before installing or maintaining this fitting. Ensure other persons cannot restore the electricity supply without your knowledge.
- * To avoid damage to concealed wiring during installation, establish the direction of the supply cable before drilling fixing holes.
- * This fitting is Class 1 = $\frac{1}{\text{I}}$ and should be fitted to a lighting supply (with earth) protected by a 5 amp fuse or equivalent circuit breaker.
- * Always be sure to use the correct type and wattage of bulbs as indicated on the fitting. Never exceed the wattage stated.
- * When changing the bulb, always switch off at the mains and allow the old bulb to cool down before handling. Dispose of used bulbs carefully.
- * Always replace the protective shield if cracked or broken. 

INSTALLATION

1. Ensure the house electricity supply is off at the fuse board.
2. If you are fitting this unit in place of an existing fitting, you may find that there are more than 3 sets of cables connected within the rose. Before removing the existing rose, carefully note position of each set of cables. If there are loop in cables that are not connected to light these must be terminated in a separate terminal block not connected to fitting.
3. Remove mounting bracket from fitting by undoing screws on both side of ceiling rose and remove earth wire attached to mounting bracket.
4. Attach mounting bracket onto the ceiling using suitable fixings. ① Ensure screws are firmly fixed into a ceiling joist or other suitable mounting and not just the plaster.
5. You may need to undo the grub screw located short stem of lighting dome. Screw stem onto lighting dome and ensure this is screwed in tight before using Allen key to tighten grub screws.
6. **Adjust height** of fitting by first turning locking nut at the end of top stem anticlockwise to loosen and adjust height as required. ② **Turn locking nut clockwise to lock into position then use Allen key to tighten grub screws and firmly secure stem in place – ALL GRUB SCREWS FITTED TO THIS PRODUCT MUST BE FULLY TIGHTENED BEFORE INSTALLATION.**
7. The weight of fitting must be supported whilst you make electrical connections, you may need to reconnect earth wire from mounting bracket to terminal block. ③ Feed incoming supply cable through the rubber sleeve on terminal block.
Connect supply live (normally brown or red) to terminal block marked 'L' on fitting.
Connect supply neutral (normally blue or black) to terminal block marked 'N' on the fitting.
Connect the earth (normally green/yellow or unsheathed) to terminal block marked ' $\frac{1}{\text{I}}$ ' on the fitting.
Ensure electrical connections are tight and no loose strands of wire are left out of the terminal block. Ensure terminals and rubber sleeve is correctly seated then close connector block housing by snapping together.
8. Offer ceiling rose onto mounting bracket and make sure wires are free and not trapped at the edge of ceiling rose, secure into place with washers and thumb nuts removed earlier. ④
9. **To fit bulb**, push one end of bulb into one end of spring loaded holder and slide the other end into the other holder. ⑤ Do not touch halogen bulbs with bare hands as this will shorten its life. **The wattage indicated must not be exceeded.**
10. Using retaining nuts provided, attach the glass support ring onto underside of the dome and ensure this is fully secured. ⑥
11. **You may require assistance to fit glass:** Offer the main glass onto dome ⑦ and make sure it is central then use circular plate followed by 3 nuts to secure glass in place. Offer decorative plate over bulb housing then use 2 thumb nuts to secure the plate.
⑧ Always replace the protective shield if cracked or broken.
12. Switch on the electricity supply at the fuse board.

GENERAL INFORMATION

This fitting is designed for internal use only and must be fitted to a DRY SURFACE as any dampness in plaster or paint can damage the finish. **Do not use polish or abrasive cleaner - just a soft dry cloth.**



To register your product for an extended five-year warranty, please complete the simple form at

www.darlighting.co.uk/warranty

You'll need to fill in the details of the product, the retailer you purchased it from, and also the installer and the installation. Please also upload a clear copy of the original purchase invoice or receipt to complete this registration.

UK: dār Lighting Ltd, Wildmere Road, Banbury, Oxon, OX16 3JZ

Ireland & EU: Dar Lighting Ireland Limited, Suite 108, Q House, 76 Furze Road, Sandyford Industrial Estate, Dublin 18